

TELEPHONE: 1-800-463-0400

www.jrperreault.com

NORDIC-PREMIUM EFFICIENCY

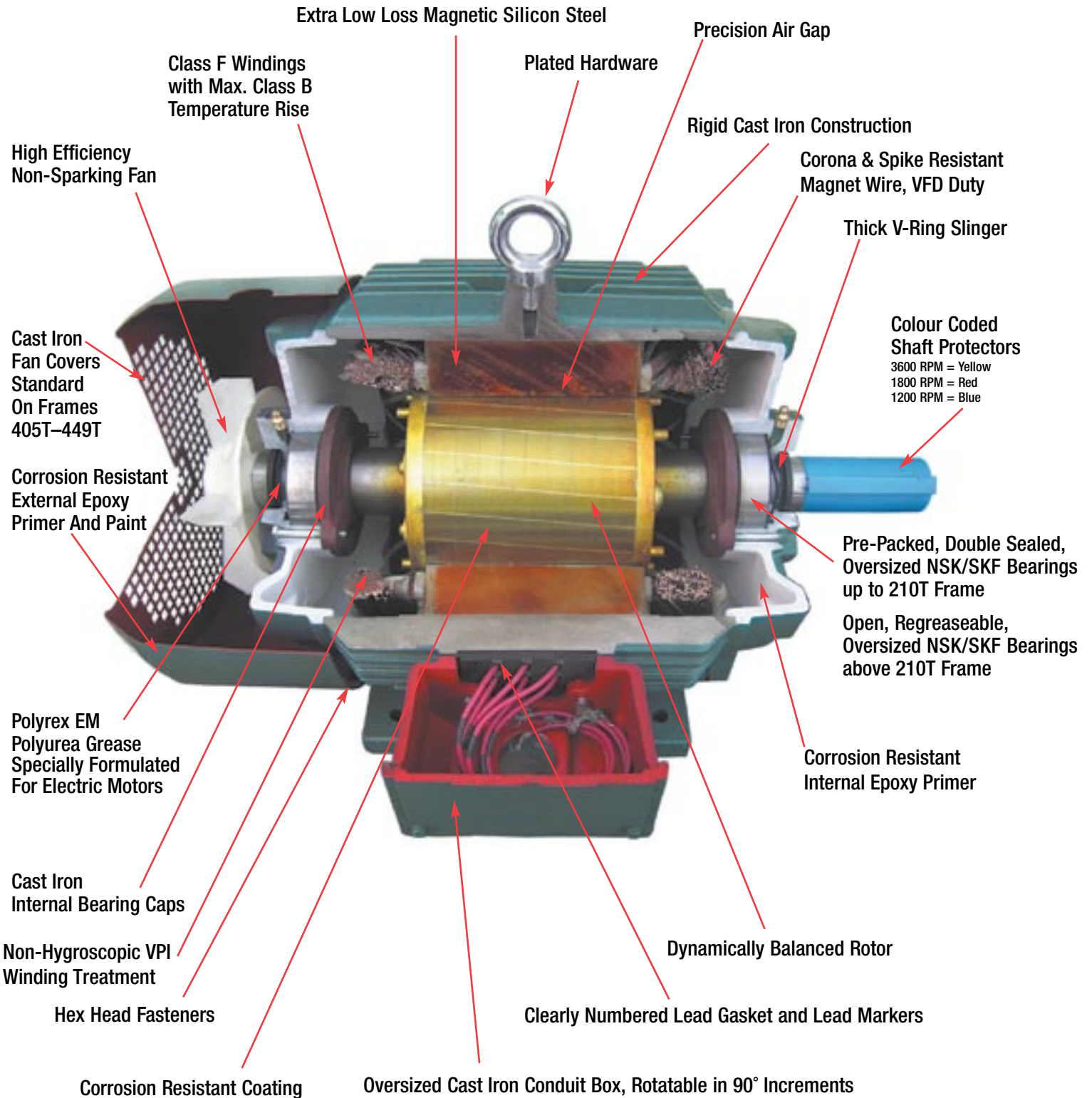
CAST IRON PREMIUM EFFICIENCY ELECTRIC MOTORS



VFD COMPATIBLE

- MEETS OR EXCEEDS NEMA MG-1 TABLE 12-12 PREMIUM EFFICIENCY
- CORONA & SPIKE RESISTANT MAGNET WIRE
- MG1, PART 31 INVERTER DUTY, 10:1 CONSTANT TORQUE, ZERO TO BASE SPEED VARIABLE TORQUE
- TEFC SEVERE DUTY IP55
- CLASS F INSULATED WITH CLASS B OR LOWER TEMPERATURE RISE
- CAST IRON FRAMES
- 1.15 SERVICE FACTOR
- OVERSIZED NSK/SKF BEARINGS
- EXTRA LOW-LOSS ELECTRICAL GRADE LAMINATION STEEL
- V-RING SLINGER KEEPS OUT MOISTURE AND CONTAMINATION
- CORROSION RESISTANT EPOXY PAINT INSIDE AND OUTSIDE

NORDIC-PE Cross-Section View



Note: Construction Varies With Frame Size.

NORDIC PREMIUM EFFICIENCY

MOTEURS HAUT RENDEMENT (EEV) CERTIFIÉ CSA (USA)
 BÂTI EN FONTE SERVICE FACTOR 1.15
 ISOLATION DE CLASSE F (155°C)
 ELEVATION DE TEMPERATURE DE CLASSE B (90°C)
 MOTEURS COMPLETEMENT FERMÉS AUTO-VENTILÉS IP55
 INVERTER DUTY: 5:1 CONSTANT ET 10:1 VARIABLE, NEMA MG-1, PART 31
 PROCÉDÉ DE VERNISSAGE V.P.I.
 ROULEMENTS ET BOITE DE RACCORD SUR-DIMENSIONNÉS

HIGH EFFICIENCY MOTORS (EEV) CSA CERTIFIED (USA)
 CAST IRON FRAME WITH SERVICE FACTOR 1.15
 INSULATION CLASS F (155°C)
 CLASS B TEMPERATURE RISE (90°C)
 TOTALLY ENCLOSED FAN COOLED MOTORS IP 55
 INVERTER DUTY: 5:1 CONSTANT AND 10:1 VARIABLE, NEMA MG-1, PART 31
 V.P.I. PROCESS APPLIED
 OVERSIZED BEARINGS AND TERMINAL BOX



TYPE	MODEL	VOLT CODE	HP	RPM	FRAME	ENCL.	LISTE
NPE-	143T4-	XXX	1	1800	143T	TEFC	471.00 \$
NPE-	145T6-	XXX	1	1200	145T	TEFC	541.00 \$
NPE-	182T8-	XXX	1	900	182T	TEFC	1 085.00 \$
NPE-	143T2-	XXX	1.5	3600	143T	TEFC	479.00 \$
NPE-	145T4A-	XXX	1.5	1800	145T	TEFC	526.00 \$
NPE-	182T6-	XXX	1.5	1200	182T	TEFC	835.00 \$
NPE-	184T8-	XXX	1.5	900	184T	TEFC	1 212.00 \$
NPE-	145T2-	XXX	2	3600	145T	TEFC	535.00 \$
NPE-	145T4B-	XXX	2	1800	145T	TEFC	535.00 \$
NPE-	184T6-	XXX	2	1200	184T	TEFC	933.00 \$
NPE-	213T8-	XXX	2	900	213T	TEFC	1 439.00 \$
NPE-	182T2-	XXX	3	3600	182T	TEFC	800.00 \$
NPE-	182T4-	XXX	3	1800	182T	TEFC	875.00 \$
NPE-	213T6-	XXX	3	1200	213T	TEFC	1 107.00 \$
NPE-	215T8-	XXX	3	900	215T	TEFC	1 562.00 \$
NPE-	184T2-	XXX	5	3600	184T	TEFC	887.00 \$
NPE-	184T4-	XXX	5	1800	184T	TEFC	950.00 \$
NPE-	215T6-	XXX	5	1200	215T	TEFC	1 202.00 \$
NPE-	254T8-	XXX	5	900	254T	TEFC	2 428.00 \$
NPE-	213T2-	XXX	7.5	3600	213T	TEFC	1 310.00 \$
NPE-	213T4-	XXX	7.5	1800	213T	TEFC	1 305.00 \$
NPE-	254T6-	XXX	7.5	1200	254T	TEFC	1 868.00 \$
NPE-	256T8-	XXX	7.5	900	256T	TEFC	2 745.00 \$
NPE-	215T2-	XXX	10	3600	215T	TEFC	1 452.00 \$
NPE-	215T4-	XXX	10	1800	215T	TEFC	1 452.00 \$
NPE-	256T6-	XXX	10	1200	256T	TEFC	2 112.00 \$
NPE-	284T8-	XXX	10	900	284T	TEFC	3 724.00 \$
NPE-	254T2-	XXX	15	3600	254T	TEFC	2 261.00 \$
NPE-	254T4-	XXX	15	1800	254T	TEFC	2 237.00 \$
NPE-	284T6-	XXX	15	1200	284T	TEFC	2 865.00 \$
NPE-	286T8-	XXX	15	900	286T	TEFC	4 102.00 \$
NPE-	256T2-	XXX	20	3600	256T	TEFC	2 519.00 \$
NPE-	256T4-	XXX	20	1800	256T	TEFC	2 605.00 \$
NPE-	286T6-	XXX	20	1200	286T	TEFC	3 156.00 \$
NPE-	324T8-	XXX	20	900	324T	TEFC	5 262.00 \$
NPE-	284TS2-	XXX	25	3600	284TS	TEFC	3 196.00 \$
NPE-	284T4-	XXX	25	1800	284T	TEFC	3 304.00 \$
NPE-	324T6-	XXX	25	1200	324T	TEFC	4 048.00 \$
NPE-	326T8-	XXX	25	900	326T	TEFC	5 739.00 \$

TYPE	MODEL	VOLT CODE	HP	RPM	FRAME	ENCL.	LISTE
NPE-	286TS2-	XXX	30	3600	286TS	TEFC	3 384.00 \$
NPE-	286T4-	XXX	30	1800	286T	TEFC	3 436.00 \$
NPE-	326T6-	XXX	30	1200	326T	TEFC	4 415.00 \$
NPE-	364T8-	XXX	30	900	364T	TEFC	7 456.00 \$
NPE-	324TS2-	XXX	40	3600	324TS	TEFC	4 530.00 \$
NPE-	324T4-	XXX	40	1800	324T	TEFC	4 513.00 \$
NPE-	364T6-	XXX	40	1200	364T	TEFC	5 736.00 \$
NPE-	365T8-	XXX	40	900	365T	TEFC	8 461.00 \$
NPE-	326TS2-	XXX	50	3600	326TS	TEFC	4 996.00 \$
NPE-	326T4-	XXX	50	1800	326T	TEFC	5 262.00 \$
NPE-	365T6-	XXX	50	1200	365T	TEFC	6 509.00 \$
NPE-	404T8-	XXX	50	900	404T	TEFC	11 064.00 \$
NPE-	364TS2-	XXX	60	3600	364TS	TEFC	6 902.00 \$
NPE-	364T4-	XXX	60	1800	364T	TEFC	6 098.00 \$
NPE-	404T6-	XXX	60	1200	404T	TEFC	8 511.00 \$
NPE-	405T8-	XXX	60	900	405T	TEFC	12 278.00 \$
NPE-	365TS2-	XXX	75	3600	365TS	TEFC	7 433.00 \$
NPE-	365T4-	XXX	75	1800	365T	TEFC	7 107.00 \$
NPE-	405T6-	XXX	75	1200	405T	TEFC	9 445.00 \$
NPE-	444T8-	XXX	75	900	444T	TEFC	16 716.00 \$
NPE-	405TS2-	XXX	100	3600	405TS	TEFC	9 266.00 \$
NPE-	405T4-	XXX	100	1800	405T	TEFC	10 357.00 \$
NPE-	444T6-	XXX	100	1200	444T	TEFC	12 859.00 \$
NPE-	445T8-	XXX	100	900	445T	TEFC	22 064.00 \$
NPE-	444TS2-	XXX	125	3600	444TS	TEFC	15 534.00 \$
NPE-	444T4-	XXX	125	1800	444T	TEFC	14 965.00 \$
NPE-	445T6-	XXX	125	1200	445T	TEFC	16 973.00 \$
NPE-	447T8-	XXX	125	900	447T	TEFC	24 667.00 \$
NPE-	445TS2-	XXX	150	3600	445TS	TEFC	18 288.00 \$
NPE-	445T4-	XXX	150	1800	445T	TEFC	17 699.00 \$
NPE-	449T8-	XXX	150	1200	447T	TEFC	18 975.00 \$
NPE-	447TS2-	XXX	200	3600	447TS	TEFC	21 133.00 \$
NPE-	447T4-	XXX	200	1800	447T	TEFC	20 515.00 \$
NPE-	449T6-	XXX	200	1200	449T	TEFC	26 850.00 \$
NPE-	447TS2A-	XXX	250	3600	449TS	TEFC	25 603.00 \$
NPE-	447T4A-	XXX	250	1800	449T	TEFC	24 790.00 \$

VOLT CODE:
 575 575 VOLTS
 2X4 230/460 VOLTS

TC	140TC	71.00 \$	TD	140TD	155.00 \$
TC	180TC	80.00 \$	TD	180TD	174.00 \$
TC	210TC	98.00 \$	TD	210TD	228.00 \$
TC	250TC	111.00 \$	TD	250TD	319.00 \$
TC	280TC	134.00 \$	TD	280TD	428.00 \$
TC	320TC	497.00 \$	TD	320TD	637.00 \$
TC	360TC	605.00 \$	TD	360TD	855.00 \$
TC	400TC	666.00 \$	TD	400TD	985.00 \$
TC	440TC	887.00 \$	TD	440TD	1 125.00 \$

CODE: WNN
 DISC.:



— VFD DUTY —

10:1 CONSTANT TORQUE, ZERO TO BASE SPEED VARIABLE TORQUE

NORDIC-PE Construction Features

Optimized Design For Long Life and High Performance

- NEMA MG-1 table 12-12 premium efficiency.
- AC, 3-phase, squirrel cage induction motor.
- Totally enclosed fan cooled, IP55 protection.
- 60 hertz, 208-230/460 Volts and 575 Volts, at 1.15 SF.
- Usable on 50 hertz, 380/400/415 Volts at 1.0 SF.
- Supply voltage +/- 10%, supply frequency +/- 5%.
- Usable at altitudes to 1000 metres without de-rate.
- Rigid cast iron frame, end brackets, and conduit box. Cast iron fan covers standard on frames 405T–449T.
- NEMA MG.1, EEMAC M1-6, CSA C390.
- Continuous duty, 1.15 service factor.
- Colour coded shaft covers and rust inhibitor coating protects the shaft.
- Stainless Steel, 4 Rivet Nameplate.
- Wye-Delta start capability from Frame 210T and higher.
- Premium efficiency with high power factor.
- Bidirectional rotation.
- F1 mounting, field modifiable to F2 orientation.
- Standard ground lug in terminal box plus additional ground lug on motor foot for frames 324T and higher.
- Polyrex EM polyurea grease for -40° C to +40° C ambient temperatures.
- Oversized vacuum degassed NSK/SKF bearings.
- Corona and spike resistant magnet wire.
- Up to frame 210T are NSK/SKF pre-packed double sealed LL bearings which are greased for life at the factory and do not need re-lubrication.
- Frames 254T and higher use NSK/SKF open bearings, re-greasable while running, with integral grease fittings & drains, and cast iron internal bearing caps.
- Thick V-Ring slinger protects bearing against moisture and contaminants.
- Class B or lower temperature rise ensures cool running and increased insulation life.
- Non-hygroscopic, vacuum pressure impregnated, Class F rated insulation system ensures ample temperature reserve under all operating conditions.
- Polypropylene, high-efficiency, non-static, non-sparking external cooling fan.
- All fasteners are plated Hex Head bolts or Philips multi-head bolts.
- Plated eye-bolts accessible through the crate for lifting with the crate intact (except 140 frames).
- All internal surfaces coated with epoxy primer for corrosion protection.
- Rotor surface coated with a rust inhibitor treatment.
- Corrosion resistant epoxy primer and paint system on all external surfaces.

NORDIC-PE Performance Data:

HP	Full Load r/min	Frame	Code	Current at 460V		Current at 575V		Torque			Efficiency			Power Factor			Approx. Weight (lbs)
				Full Load (A)	Locked Rotor (A)	Full Load (A)	Locked Rotor (A)	Full Load (LB-FT)	Locked Rotor %	Break Down %	Full Load %	3/4 Load %	1/2 Load %	Full Load %	3/4 Load %	1/2 Load %	
1	3495	143T	K	1.5	11.0	1.2	8.8	1.51	250	300	77.0	76.3	75.0	82.0	76.8	64.8	56
1	1750	143T	K	1.5	11.0	1.2	8.8	3.02	250	300	85.5	85.0	83.6	78.0	70.6	58.1	51
1	1150	145T	H	1.7	8.0	1.4	6.4	4.60	230	275	82.5	82.1	81.0	68.0	67.5	54.4	67
1.5	3495	143T	K	2.0	16.0	1.6	12.8	2.26	250	300	84.4	85.2	84.9	84.0	84.7	75.4	59
1.5	1745	145T	J	2.1	15.0	1.7	12.0	4.52	265	280	86.5	86.3	85.4	78.0	72.8	60.9	61
1.5	1180	182T	H	2.2	14.0	1.8	11.2	6.69	200	285	87.5	87.2	85.5	75.0	68.1	54.3	97
2	3485	145T	J	2.6	19.0	2.1	15.2	3.01	220	265	85.5	86.1	86.3	85.0	88.3	81.7	59
2	1740	145T	J	2.8	19.0	2.2	15.2	6.04	260	280	86.5	86.8	86.2	78.0	75.4	64.2	64
2	1180	184T	J	2.9	18.0	2.3	14.4	8.90	200	280	88.5	88.1	86.6	75.0	68.8	54.7	108
3	3540	182T	J	3.8	30.0	3.0	24.0	4.46	200	280	87.1	87.3	86.5	87.0	85.1	76.3	106
3	1765	182T	J	3.7	29.0	3.0	23.2	8.94	210	300	89.5	89.2	88.4	86.0	81.2	71.2	106
3	1180	213T	J	4.2	29.0	3.4	23.2	13.38	200	250	89.5	89.6	88.5	75.0	73.1	61.1	161
5	3530	184T	H	6.1	44.0	4.9	35.2	7.45	200	280	88.5	89.0	88.7	88.0	87.9	81.0	112
5	1755	184T	H	6.1	42.0	4.9	33.6	14.98	220	270	89.5	89.2	88.7	86.0	82.2	72.8	112
5	1180	215T	J	6.9	46.0	5.5	36.8	22.28	200	250	89.5	90.0	89.5	76.0	77.1	66.4	170
7.5	3535	213T	H	9.0	59.0	7.2	47.2	11.19	210	280	89.7	90.0	89.5	88.0	89.3	83.6	176
7.5	1770	213T	G	9.1	56.0	7.3	44.8	22.30	210	260	91.7	91.5	91.1	85.0	82.6	73.7	176
7.5	1185	254T	G	10.3	59.0	8.2	47.2	33.07	220	250	91.0	91.1	90.4	75.0	74.0	63.2	278
10	3530	215T	G	11.8	78.0	9.4	62.4	14.89	220	270	90.4	90.8	90.5	88.0	90.7	86.0	187
10	1765	215T	F	12.1	69.0	9.7	55.2	29.79	200	250	91.7	91.8	91.6	85.0	84.5	76.8	194
10	1185	256T	G	13.8	79.0	11.0	63.2	37.00	220	250	91.2	91.5	90.9	75.0	74.8	64.3	278
15	3560	254T	G	17.4	113.0	13.9	90.4	22.15	210	260	91.2	91.2	90.9	89.0	91.9	88.1	291
15	1775	254T	G	17.9	111.0	14.3	88.8	44.43	210	260	92.4	92.2	91.8	85.0	87.1	80.5	297
15	1185	284T	G	19.0	108.0	15.2	86.4	66.55	210	250	91.7	91.6	91.1	81.0	79.6	70.0	421
20	3555	256T	F	23.2	140.0	18.6	112.0	29.58	200	250	91.2	91.3	91.2	89.0	92.5	89.5	304
20	1775	256T	G	23.7	144.0	19.0	115.2	59.24	200	250	93.0	92.6	92.2	85.0	87.8	81.8	322
20	1185	286T	G	25.3	143.0	20.2	114.4	88.74	200	230	91.7	91.7	91.4	81.0	80.7	72.0	452
25	3565	284TS	F	28.4	168.0	22.7	134.4	36.87	200	250	91.7	92.0	91.8	90.0	93.2	91.3	458
25	1775	284T	F	28.8	167.0	23.0	133.6	74.05	200	245	93.6	93.2	92.8	87.0	88.3	82.9	465
25	1185	324T	F	30.7	169.0	24.6	135.2	110.92	200	230	93.0	93.0	92.5	82.0	80.6	71.9	522
30	3560	286TS	F	34.1	201.0	27.3	160.8	44.31	200	240	91.9	92.3	92.2	90.0	93.1	91.3	500
30	1775	286T	F	34.5	194.0	27.6	155.2	88.86	210	250	93.6	93.4	93.1	87.0	89.0	84.3	507
30	1185	326T	E	36.9	188.0	29.5	150.4	133.11	210	230	93.0	93.1	92.8	82.0	81.4	73.5	617
40	3570	324TS	E	45.1	244.0	36.1	195.2	58.91	190	250	92.4	92.1	91.6	90.0	90.9	86.9	557
40	1780	324T	F	45.3	271.0	36.2	216.8	118.15	190	250	94.1	93.7	93.3	88.0	86.0	79.3	586
40	1190	364T	G	46.3	285.0	37.0	228.0	176.73	220	240	94.1	94.1	93.6	86.0	83.5	76.4	797
50	3570	326TS	E	56.0	299.0	44.8	239.2	73.64	185	250	93.0	92.8	92.4	90.0	91.4	87.9	709
50	1780	326T	F	56.3	340.0	45.0	272.0	147.69	200	250	94.5	94.0	93.7	88.0	87.2	81.1	749
50	1190	365T	F	57.9	341.0	46.3	272.8	220.91	200	230	94.1	94.2	93.8	86.0	84.3	77.8	848
60	3575	364TS	F	66.7	403.0	53.4	322.4	88.24	190	250	93.6	93.4	93.0	90.0	93.4	91.1	841
60	1785	364T	F	68.0	412.0	54.4	329.6	176.73	190	250	95.0	94.1	93.8	87.0	87.2	81.2	826
60	1190	404T	F	69.2	406.0	55.4	324.8	265.10	190	240	94.5	94.4	94.1	86.0	85.0	78.0	1002
75	3575	365TS	F	83.4	479.0	66.7	383.2	110.32	180	230	93.6	93.8	93.6	90.0	93.2	91.1	877
75	1785	365T	F	84.7	521.0	67.8	416.8	220.95	200	250	95.4	94.5	94.1	87.0	87.7	81.9	885
75	1190	405T	G	86.5	531.0	69.2	424.8	331.43	190	230	94.5	94.7	94.3	86.0	85.2	78.5	1178
100	3575	405TS	F	110.0	667.0	88.0	533.6	147.07	180	250	94.1	94.2	94.0	91.0	92.7	90.2	1070
100	1785	405T	F	113.0	674.0	90.4	539.2	294.55	180	250	95.4	94.8	94.4	87.0	86.2	79.7	1161
100	1190	444T	F	115.0	691.0	92.0	552.8	441.83	180	230	95.0	94.8	94.3	86.0	83.3	75.5	1496
125	3580	444TS	F	136.0	810.0	108.8	648.0	183.58	165	230	95.0	95.0	94.0	91.0	92.0	89.0	1445
125	1790	444T	F	140.0	828.0	112.0	662.4	367.16	180	240	95.4	95.0	94.7	88.0	89.5	85.1	1502
125	1190	445T	F	144.0	852.0	115.2	681.6	552.28	180	230	95.0	95.0	94.6	86.0	84.3	77.3	1720
150	3580	445TS	F	163.0	980.0	130.4	784.0	220.30	160	230	95.0	95.1	93.8	91.0	92.1	89.4	1599
150	1790	445T	F	167.0	982.0	133.6	785.6	440.59	170	240	95.8	95.3	94.9	88.0	90.3	86.6	1762
150	1190	447T	F	171.0	1041.0	136.8	832.8	662.74	170	230	95.8	95.3	94.8	86.0	85.3	78.8	2084
200	3580	447TS	F	214.0	1284.0	171.2	1027.2	293.73	170	220	95.4	95.1	93.8	92.0	92.3	90.5	1907
200	1790	447T	F	222.0	1325.0	177.6	1060.0	587.46	185	240	96.2	95.6	95.2	88.0	90.5	86.7	2018
200	1190	449T	F	228.0	1376.0	182.4	1100.8	883.65	170	220	95.8	95.5	95.1	86.0	86.1	80.3	2282
250	3580	449T	F	266.0	1550.0	212.8	1240.0	367.16	180	220	95.8	95.4	94.3	92.0	92.4	91.0	2216
250	1790	449T	F	277.0	1667.0	221.6	1333.6	734.32	185	230	96.2	95.8	95.5	88.0	91.1	88.0	2480

Note: For current at 230V, multiply 460V values by 2.
 For current at 208V, multiply 460V values by 2.2
 For current at 575 volts, multiply 460 volts value by 0.80.



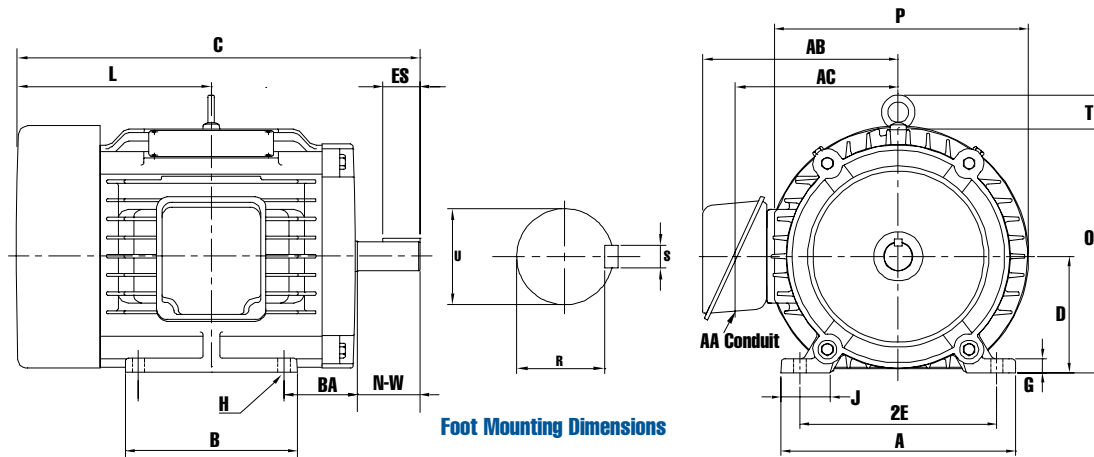
— VFD DUTY —

10:1 CONSTANT TORQUE, ZERO TO BASE SPEED VARIABLE TORQUE

NORDIC-PE Features & Benefits

Optimized Design For Quality, Efficiency, and Reliability

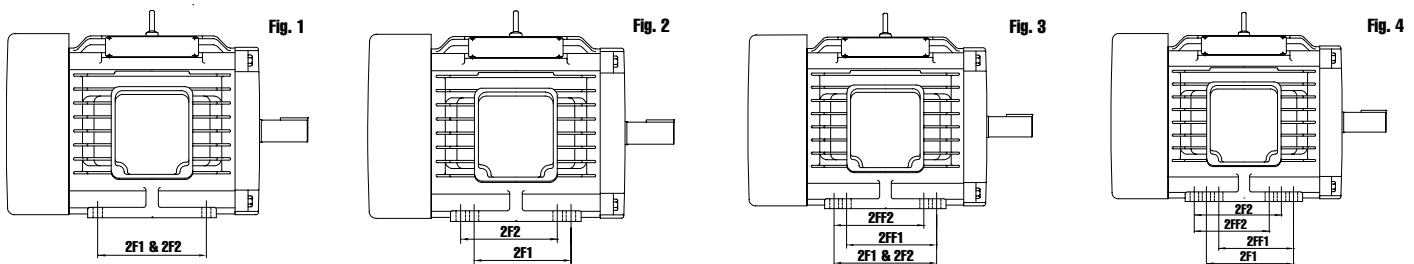
- Premium efficiency per NEMA MG-1 table 12-12.
- Quiet running with minimum noise and vibration.
- NEMA Design B or C torques.
- Cool running with low temperature rise.
- Class F insulation with Class B or less temperature rise ensures long life.
- CSA approved and EEV verified.
- Oversize NSK/SKF bearings with specially formulated Polyrex EM polyurea bearing grease for smooth running, long life, and wide temperature range.
- Thick V-Ring slinger keeps out moisture and contamination.
- Extra low loss insulated silicon electro-magnetic steel laminations for controlled core loss and maximum efficiency.
- Heavy enamel coated copper windings with precise winding process ensures consistent motor performance and extended insulation life.
- Superior class F non-hygroscopic, vacuum pressure impregnated insulation system resists heat, contaminants, and coil movement.
- Die cast rotor of high conductivity aluminum eliminates variations in rotor bar and end ring resistance thereby assuring consistent motor performance.
- C & D Flange kits available.
- Corona & spike resistant magnet wire.
- Dynamically balanced rotor with half key meets or exceeds NEMA standards ensuring smooth running with no vibration.
- Clearly numbered, high visibility lead markers make connections easy.
- Clearly numbered lead gasket ensures lead numbers are always identifiable even if the lead markers are lost or dirty.
- Thick neoprene lead gasket between conduit box and motor protects against moisture, dirt, or dust entering the motor.
- Oversized, diagonally split, full gasket conduit box, fully rotatable at 90 degree increments for ease of installation wiring.
- Non-sparking, high efficiency, corrosion resistant polypropylene external cooling fan assures best motor cooling and quiet operation.
- Rotor surface is coated for outstanding corrosion resistance.
- External surfaces are coated with a corrosion resistant primer and paint system designed to protect the motor against severe environments.
- Plated hardware and non-corrodible 4-rivet stainless steel nameplate for further corrosion protection and readability under severe conditions.



NORDIC-PE TEFC Dimension Data (inches)

Frame	rpm	Fig.	H dia.	# of Holes	MOUNTING						SHAFT		KEYWAY			OVERALL										BEARINGS				
					BA	D	2E	2F1	2F2	2FF1	2FF2	U	N-W	R	ES min.	S	A	AA	AB	AC	B	C	G	J	L	O	P	T	DE	NDE
143T	all	2	0.34	8	2.25	3.5	5.5	4	4	-	-	0.875	2.25	0.771	1.41	0.188	7	3/4 NPT	6.7	5	6.0	13.5	.512	1.45	7.3	7.2	No eye bolt	6205LL	6205LL	
145T	all	4		12				5	5	4	4										6.8	14.5								
182T	3600	2	0.41	8	2.75	4.5	7.5	4.5	4.5	-	-	1.125	2.75	0.986	1.78	0.25	9	3/4 NPT	7.8	6.1	7.7	16.2	0.669	1.77	7.44	9.1	9.4	1.58	6206LL	6206LL
	1800	4		12				5.5	5.5	4.5	4.5										8.7	17.1								
1200	2	8		4.5				4.5	-	-																				
all	4	12		5.5				5.5	4.5	4.5																				
213T	all	1	0.41	4	3.5	5.25	8.5	5.5	5.5	-	-	1.375	3.38	1.201	2.41	0.312	10.5	1.00 NPT	10	7.1	7.5	18	0.787	1.97	8.19	10.9	10.9	1.97	6208LL	6208LL
215T	all	3		8				7	7	5.5	5.5										9.0	20			8.94					
254T	all	1	0.53	4	4.25	6.25	10	8.25	8.25	-	-	1.625	4.00	1.416	2.91	0.375	12.5	1.25 NPT	11	8.6	10.8	23.5	0.83	2.56	10.67	13.6	13.6	2.35	6309	6309
256T	all	3		8				10	10	8.25	8.25										12.5	25.2			11.57					
284T	all	1	0.53	4	4.75	7	11	9.5	9.5	-	-	1.875	4.62	1.591	3.28	0.5	14	1.50 NPT	14.2	10	12.5	26.6	0.94	2.76	11.95	14.6	15.1	2.35	6311	6311
284TS	all	3		8				9.5	9.5	-	-										25.2	26.7								
286T	all	3	0.53	8	4.75	7	11	11	11	9.5	9.5	1.625	3.25	1.416	1.91	0.375	14	1.50 NPT	14.2	10	14	28.1	0.94	2.76	12.70	14.6	15.1	2.35	6311	6311
286TS	all	3		8				9.5	9.5	-	-										26.7	26.7								
324T	all	1	0.66	4	5.25	8	12.5	10.5	10.5	-	-	2.125	5.25	1.845	3.91	0.5	16	2.00 NPT	15	10.9	14.8	31.7	0.98	2.76	14.61	16.4	16.7	2.5	6312	6312
324TS	all	3		8				10.5	10.5	-	-										30.2	33.3								
326T	all	3	0.66	8	5.25	8	12.5	12	12	10.5	10.5	2.125	5.25	1.845	3.91	0.5	16	2.00 NPT	15	10.9	16.3	33.3	0.98	2.76	15.35	16.4	16.7	2.5	6312	6312
326TS	all	3		8				10.5	10.5	-	-										31.7	31.7								
364T	all	1	0.66	4	5.88	9	14	11.25	11.25	-	-	2.375	5.88	2.021	4.28	0.625	18	3.00 NPT	17.5	12.85	16.3	33.7	0.98	3.11	15.12	18.31	18.1	2.5	6314	6314
364TS	all	3		8				11.25	11.25	-	-										31.5	31.5								
365T	all	3	0.66	8	5.88	9	14	12.25	12.25	11.25	11.25	2.375	5.88	2.021	4.28	0.625	18	3.00 NPT	17.5	12.85	18	37.1	0.98	3.11	16.79	18.31	18.1	2.5	6314	6314
365TS	all	3		8				11.25	11.25	-	-										34.7	34.7								
404T	all	1	0.81	4	6.62	10	16	12.25	12.25	-	-	2.875	7.25	2.45	5.65	0.75	20	3.00 NPT	18.8	12.2	19.0	39	1.18	3.15	17.97	20.12	20.3	2.5	6316	6316
404TS	all	3		8				12.25	12.25	-	-										36	39								
405T	all	3	0.81	8	6.62	10	16	13.75	13.75	12.25	12.25	2.875	7.25	2.45	5.65	0.75	20	3.00 NPT	18.8	12.2	19.0	39	1.18	3.15	17.97	20.12	20.3	2.5	6316	6316
405TS	all	3		8				12.25	12.25	-	-										36	36								
444T	all	1	0.81	4	7.5	11	18	14.5	14.5	-	-	3.375	8.5	2.88	6.91	0.875	22	3.00 NPT	19.7	14.76	20.0	45.1	1.38	3.46	20.18	22.5	23.1	3.7	NU318	6318
444TS	all	3		8				14.5	14.5	-	-										41.4	41.4								
445T	all	3	0.81	8	7.5	11	18	16.5	16.5	14.5	14.5	3.375	8.5	2.88	6.91	0.875	22	3.00 NPT	19.7	14.76	20.0	45.1	1.38	3.46	20.18	22.5	23.1	3.7	NU318	6318
445TS	all	3		8				14.5	14.5	-	-										41.4	41.4								
447T	all	3	0.81	8	7.5	11	18	20	20	16.5	16.5	3.375	8.5	2.88	6.91	0.875	22	3.00 NPT	19.7	14.76	28.0	53.6	1.38	3.46	24.43	22.5	23.1	3.7	NU320	6320
447TS	all	3		8				16.5	16.5	-	-										50.0	50.0								
447TZ	all	3	0.81	8	7.5	11	18	20	20	16.5	16.5	3.375	10.125	2.88	8.54	0.875	22	3.00 NPT	19.7	14.76	28.0	55.4	1.38	3.46	24.43	22.5	23.1	3.7	NU320	6320
449T	all	3		8				16.5	16.5	-	-										53.6	53.6								
449TS	all	3	0.81	8	7.5	11	18	25	25	20	20	2.375	4.75	2.021	3.03	0.625	22	3.00 NPT	19.7	14.76	28.0	50.0	1.38	3.46	24.43	22.5	23.1	3.7	6316	6316
449TZ	all	3		8				20	20	-	-										50.0	50.0								

2F1 & 2FF1 dimensions (2FF1 only where present) are applicable in F1 mounting position. 2F2 & 2FF2 dimensions (2FF2 only where present) are applicable in F2 mounting position.



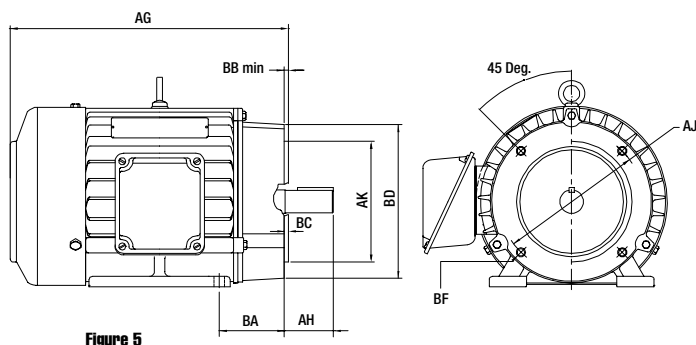


Figure 5

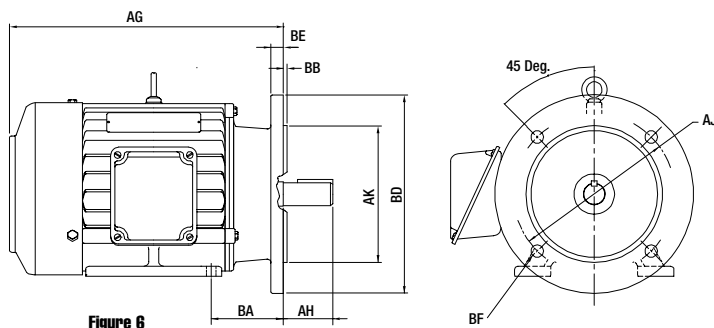


Figure 6

Dimensions (foot mount with drive end flange "kits" installed)

NORDIC-PE TEFC C-Face Dimension Data (inches)

C Flange Kits (see Fig.5)												
Frame	AG	AH	AJ	AK	NEMA BA*	Kit BA	BB min.	BC	BD max.	BF HOLE		
										qty.	Tap Size	Bolt Penetration Allowance
143TC	11.50	2.12	5.875	4.5	2.75*	2.25	0.16	0.12	6.5	4	3/8-16	0.56
145TC	12.50											
182TC	13.74	2.62	7.25	8.5	3.50*	2.75	0.25	0.12	9	4	1/2-13	0.75
184TC	14.76											
213TC	15.13	3.12	7.25	8.5	4.25*	3.5	0.25	0.25	9	4	1/2-13	0.75
215TC	17.13											
254TC	19.95	3.75	7.25	8.5	4.75*	4.25	0.25	0.25	10	4	1/2-13	0.75
256TC	21.70											
284TC	22.47	4.38										
284TSC	22.47	3	9	10.5	4.75	4.75	0.25	0.25	11.25	4	1/2-13	0.75
286TC	23.97	4.38										
286TSC	23.97	53										
324TC	26.95	5										
324TSC	26.95	3.5	11	12.5	5.25	5.25	0.25	0.25	14	4	5/8-11	0.94
326TC	28.55	5										
326TSC	28.55	3.5										
364TC	28.33	5.62										
364TSC	28.33	3.5	11	12.5	5.88	5.88	0.25	0.25	14	8	5/8-11	0.94
365TC	31.73	5.62										
365TSC	31.73	3.5										
404TC	32.58	7										
404TSC	32.58	4	11	12.5	6.62	6.62	0.25	0.25	15.5	8	5/8-11	0.94
405TC	32.58	7										
405TSC	32.58	4										
444TC	37.15	8.25										
444TSC	37.15	4.5	14	16	7.5	7.5	0.25	0.25	18	8	5/8-11	0.94
445TC	37.15	8.25										
445TSC	37.15	4.5										
447TC	45.75	8.25										
447TSC	45.75	4.5	14	16	7.5	7.5	0.25	0.25	18	8	5/8-11	0.94
449TC	45.75	8.25										
449TSC	45.75	4.5										

* = NEMA BA dimension (C flange kits installed on foot mount motors in 143T through 256T frame sizes result in a non-standard NEMA BA dimension, as the resulting BA dimension is still the same as the foot mount BA dimension. This is common in the industry)

143TC through 256TC frame motors with NEMA BA dimensions are available by factory order.

284TC frames & up have NEMA BA dimensions for both factory built and with C flange kits installed.

NORDIC-PE TEFC D-Face Dimension Data (inches)

D Flange Kits (see Fig.6)												
Frame	AG	AH	AJ	AK	NEMA BA*	Kit BA	BB	BD max.	BE nom.	BF HOLE		
										qty.	Tap Size	Recommended Bolt Length
143TD	11.50	2.25	10	9	2.75*	2.25	0.25	11	0.5	4	0.53	1.25
145TD	12.50											
182TD	13.74	2.75	10	9	3.50*	2.75	0.25	11	0.5	4	0.53	1.25
184TD	14.76											
213TD	15.13	3.38	10	9	4.25*	3.5	0.25	11	0.5	4	0.53	1.25
215TD	17.13											
254TD	19.95	4	12.5	11	4.75*	4.25	0.25	14	0.75	4	0.81	2
256TD	21.70											
284TD	22.47	4.62										
284TSD	22.47	3.25	12.5	11	4.75	4.75	0.25	14	0.75	4	0.81	2
286TD	23.97	4.62										
286TSD	23.97	3.25										
324TD	26.95	5.25										
324TSD	26.95	3.75	16	14	5.25	5.25	0.25	18	0.75	4	0.81	2
326TD	28.55	5.25										
326TSD	28.55	3.75										
364TD	28.33	5.88										
364TSD	28.33	3.75	16	14	5.88	5.88	0.25	18	0.75	4	0.81	2
365TD	31.73	5.88										
365TSD	31.73	3.75										
404TD	32.58	7.25										
404TSD	32.58	4.25	20	18	6.62	6.62	0.25	21.9	1	8	0.81	2.25
405TD	32.58	7.25										
405TSD	32.58	4.25										
444TD	37.15	8.5										
444TSD	37.15	4.75	20	18	7.5	7.5	0.25	21.9	1	8	0.81	2.25
445TD	37.15	8.5										
445TSD	37.15	4.75										
447TD	45.75	8.5										
447TSD	45.75	4.75	20	18	7.5	7.5	0.25	21.9	1	8	0.81	2.25
449TD	45.75	8.5										
449TSD	45.75	4.75										

* = NEMA BA dimension (D flange kits installed on foot mount motors in 143T through 256T frame sizes result in a non-standard NEMA BA dimension, as the resulting BA dimension is still the same as the foot mount BA dimension. This is common in the industry)

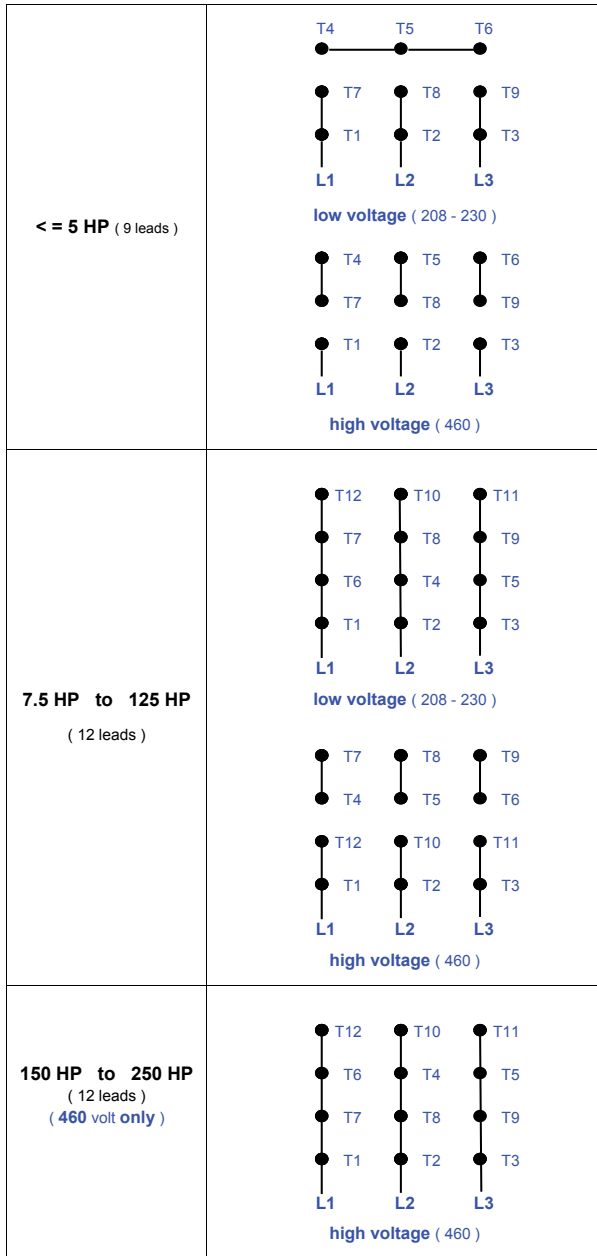
143TD through 256TD frame motors with NEMA BA dimensions are available by factory order.

284TD frames & up have NEMA BA dimensions for both factory built and with D flange kits installed.

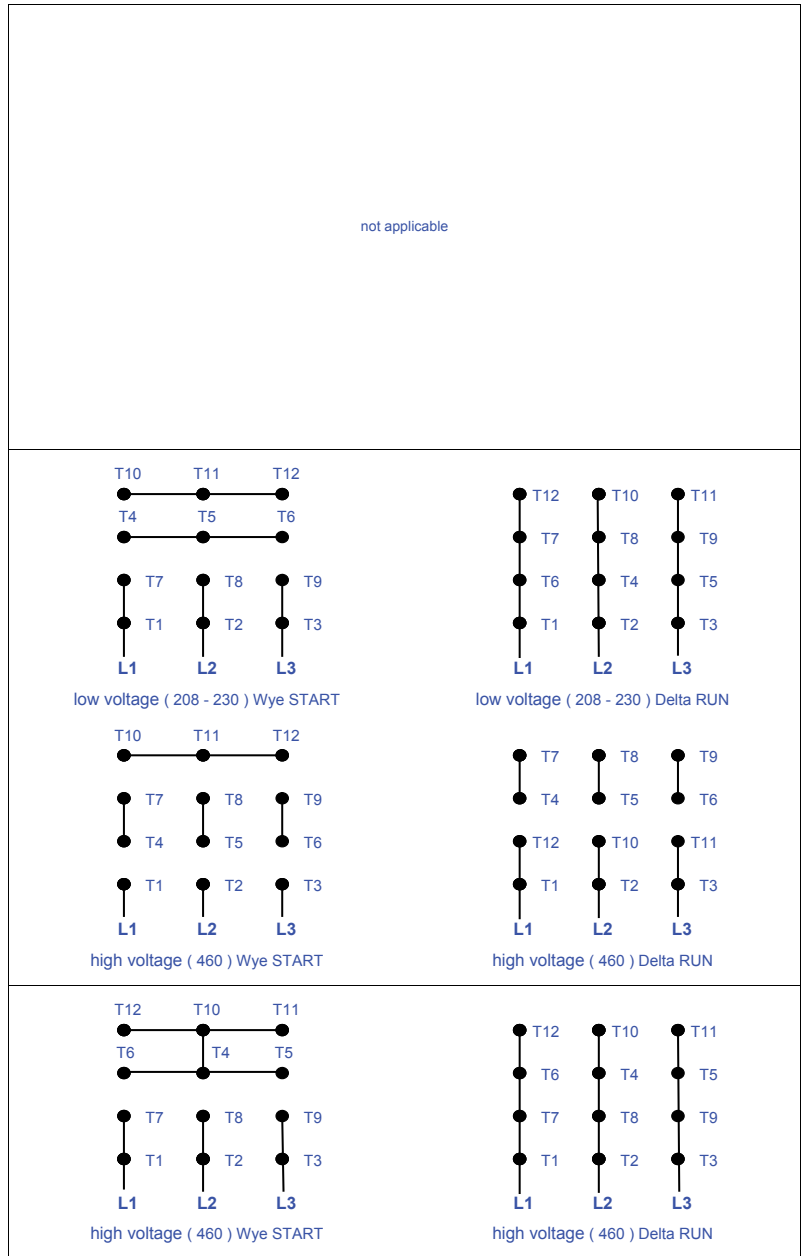
NORDIC-PE Connection Diagrams

208 - 230 / 460V

connections for direct-on-line full voltage starting

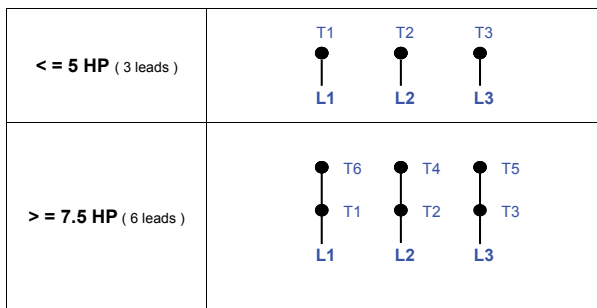


optional connections for wye-delta starting (wye start - delta run)
(these connections are only suitable for use with wye-delta type magnetic starters)

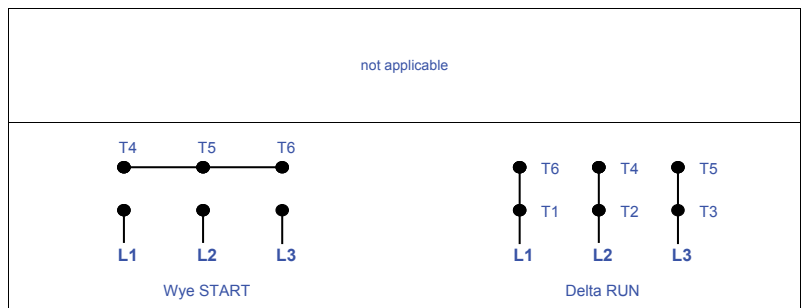


575V

connections for direct-on-line full voltage starting



optional connections for wye-delta starting (wye start - delta run)
(these connections are only suitable for use with wye-delta type magnetic starters)



NORDIC-PE

ABOVE NEMA MOTORS



- 2 year warranty
- TEFC or TEBC (blower cooled)
- General Purpose & VFD rated
- 380, 400, 415, 460, 575 volts or 2300/4160 volts or higher, up to 10KV
- 50Hz & 60Hz
- Premium or high efficiency
- CSA, C-UL and CE certified
- NEMA 5800 (580) frame and larger

Grounded cast iron stator



Separately powered blower for VFD applications



Oversized NSK/SKF bearings with Polyrex EM grease



Locked drive end



Clearly labeled, separated, and gasketed leads



Copper wire VPI windings, extra winding ties, Class 'F' insulation

