

TELEPHONE: 1-800-463-0400

www.jrperreault.com



JRP Motors 1 and 3 Phases TEFC 56C Stainless and Rolled Steel Motors

1/3-3 HP 1PH & 3PH TEFC 60 Hz NEMA AC Foot Mounted and Round Body C-Face Motors

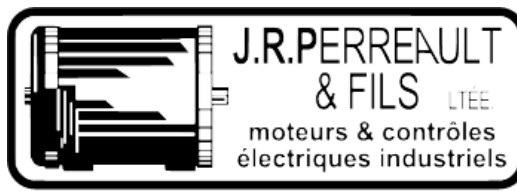
Features

- Inverter Duty Rated: 3:1CT & 5:1VT (3-Phase only)
- Service Factor: 1.15
- Design: "B"
- Protection Degree: IP55
- Enclosure: TEFC F1 mount
- Warranty: 1-Year
- C-Face with and without feet
- High starting torque
- 3-Phase 208-230/460V
- 3-Phase 380V 50Hz with lower HP output
- 1-Phase 115/230V
- 1-Phase available with and without thermal protection and manual reset
- Rolled steel NEMA frame 56C
- Aluminum alloy cast C-Face
- CSA-US certified and CE marked

Applications

Energy-saving continuous duty 56C frame motors are designed for applications requiring exceptional value, quality and performance at home and/or in light industries such as machine tools, fans, conveyors and more.





56C Frame Stainless Steel – 1/3-3 HP

1PH & 3PH 60 Hz NEMA AC Foot Mounted Motors

Applications: Continuous duty motor designed to meet the severe sanitation requirements of food-grade and high pressure washdown applications in the pharmaceutical, food and beverage, processing and packaging industries.

Features

- Inverter Duty Rated: 3:1CT & 5:1VT (3-Phase only)
- Service Factor: 1.15
- Design: "B"
- Protection Degree: IP56
- Enclosure: TEFC or TENV
- C-Face with or without feet
- Class "F" insulation with Class "B" rise
- Continuous duty
- Sealed bearings
- Squirrel cage rotor
- 300 series stainless steel construction
- 12-Gauge puddle welded base on footed motors
- Anti-corrosion coating applied
- DE and NDE drain holes every 90°
- F1 assembly
- CSA-US certified and CE marked
- Warranty: 1-Year

1PH Footed 56C Frame Stainless Steel

HP	RPM	Frame	EFF	PF	Voltage	Full Load Amps	Service Factor	NEMA Design	Net Weight	Footed Part Number	List Price	Notes (a)
1/2	3600	56C	63	83	115/230V	6.2/3.1	1.15	B	24	YC5622DJ-1X2	825.00	
	1800	56C	61	65	115/230V	8.2/4.1	1.15	B	24	YCN5634DJ-1X2	845.00	
3/4	3600	56C	63	84	115/230V	9/4.5	1.15	B	26.5	YCN5632DJ-1X2	865.00	
	1800	56C	72	68	115/230V	9.8/4.9	1.15	B	23.5	YCN5644DJ-1X2	885.00	
1	3600	56C	64	84	115/230V	12.4/6.2	1.15	B	31.5	YCN5642DJ-1X2	925.00	
	1800	56C	69	69	115/230V	13.6/6.8	1.15	B	33	YCN5654DJ-1X2	950.00	
1.5	3600	56C	65	84	115/230V	17.6/8.8	1.15	B	35	YCN5652DJ-1X2	1025.00	
	1800	56C	73	69	115/230V	19/9.5	1.15	B	38.5	YCN5674DJ-1X2	1050.00	
2	3600	56HC	72	84	115/230V	21.6/10.8	1.15	B	50	YCN5692DJ-1X2	1125.00	
	1800	56HC	76	95	115/230V	18/9	1.15	B	48	YCN5684DJ-1X2	1195.00	

3PH Footed 56C Frame Stainless Steel

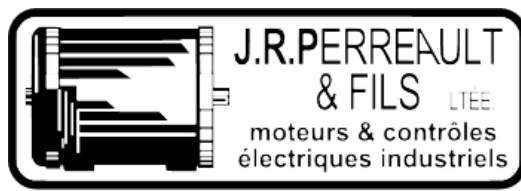
HP	RPM	Frame	EFF	PF	Voltage	Full Load Amps	Service Factor	NEMA Design	Net Weight	Footed Part Number	List Price	Notes (a)
1/3	3600	56C	67	88	208-230/460V	1.3-1.16/0.58	1.15	B	23	YXN5612DJ-XXX	676.00	TENV
	1800	56C	72	66	208-230/460V	1.4-1.3/0.65	1.15	B	22	YXN5624DJ-XXX	686.00	TENV
1/2	3600	56C	75	85	208-230/460V	1.8-1.6/0.8	1.15	B	25	YXN5622DJ-XXX	697.00	TENV
	1800	56C	78	70	208-230/460V	1.9-1.7/0.85	1.15	B	23.5	YXN5634DJ-XXX	718.00	TENV
3/4	3600	56C	80	80	208-230/460V	2.4-2.2/1.1	1.15	B	30	YXN5632DJ-XXX	728.00	TENV
	1800	56C	79	75	208-230/460V	2.7-2.4/1.2	1.15	B	31	YXN5644DJ-XXX	747.00	TENV
1	3600	56HC	80	85	208-230/460V	2.9-2.6/1.3	1.15	B	38	YXN5642DJ-XXX	849.00	
	1800	56HC	81	75	208-230/460V	3.3-3/1.5	1.15	B	38	YXN5664DJ-XXX	925.00	
1.5	3600	56HC	82.5	85	208-230/460V	4.1-3.7/1.85	1.15	B	45	YXN5662DJ-XXX	941.00	
	1800	56HC	82.5	72	208-230/460V	5.1-4.6/2.3	1.15	B	45	YXN5674DJ-XXX	947.00	
2	3600	56HC	84	87	208-230/460V	5.4-4.9/2.45	1.15	B	47	YXN5672DJ-XXX	939.00	
	1800	56HC	84	75	208-230/460V	6.4-5.8/2.9	1.15	B	51	YXN5684DJ-XXX	975.00	
3	3600	56HC	80	83	208-230/460V	8.4-7.6/3.8	1.15	B	51	YXN5682DJ-XXX	1390.00	

575 VOLTS AMPS = 460 VOLTS AMPS X 0.80

ALSO AVAILABLE IN 140TC FRAME

XXX= VOLTAGE CODE: 2X4 = 230/460

575 = 575 V.



TC Frame Stainless Steel – 1-30 HP

3PH TEFC 60 Hz NEMA AC Foot Mounted Motors

Applications: Continuous duty motor designed to meet the severe sanitation requirements of food-grade and high pressure washdown applications in the pharmaceutical, food and beverage, processing and packaging industries.

Features

- Inverter Duty Rated: 3:1CT & 5:1VT
- Service Factor: 1.15
- Design: "B" or "C"
- Protection Degree: IP55
- Enclosure: TEFC
- VPI process applied for best electrical performance
- C-Face with or without feet
- Class "F" insulation with Class "B" rise
- PTC140 thermistors standard 180 frame and up
- Continuous duty
- Sealed bearings
- Squirrel cage rotor
- 300 series stainless steel construction
- 12-Gauge puddle welded base on footed motors
- Anti-corrosion coating applied
- DE and NDE drain holes every 90°
- F1 assembly
- CSA-US certified and CE marked
- 79 Series meets NEMA Premium® efficiency requirements
- Warranty: 1-Year

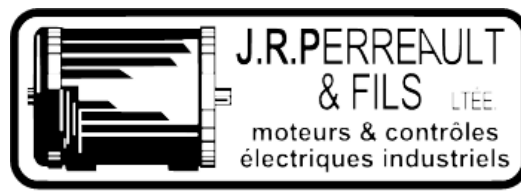
HP	RPM	Frame	EFF	PF	Voltage	Full Load Amps	Service Factor	NEMA Design	Net Weight	Footed Part Number	List Price	Notes ^(a)
1	3600	143TC	77	84	208-230/460V	3.2-2.9/1.45	1.15	B	44	YXN5643DJD-XXX	849.00	
	1800	143TC	82.5	75	208-230/460V	3.4-3.04/1.52	1.15	C	38	YXN5664DJD-XXX	925.00	
1.5	3600	143TC	84	84	208-230/460V	4.4-3.98/1.99	1.15	B	53	YXN5662DJD-XXX	941.00	
	1800	145TC	86.5	79	208-230/460V	4.6-4.12/2.06	1.15	B	53	YXN5674DJD-XXX	947.00	
2	3600	145TC	85.5	86	208-230/460V	5.6-5.1/2.55	1.15	B	55	YXN5672DJD-XXX	955.00	
	1800	145TC	86.5	80	208-230/460V	6-5.42/2.71	1.15	B	59	YXN5684DJD-XXX	975.00	
3	3600	182TC	86.5	87	208-230/460V	8.2-7.46/3.73	1.15	B	98	SS3-182TC2-XXX	1991.00	
	1800	182TC	89.5	80	208-230/460V	8.7-7.84/3.92	1.15	B	100	SS3-182TC4-XXX	2168.00	
5	3600	184TC	88.5	88	208-230/460V	13.3-12.02/6.01	1.15	B	107	SS3-184TC2-XXX	2179.00	
	1800	184TC	89.5	80	208-230/460V	14.5-13.08/6.54	1.15	B	108	SS3-184TC4-XXX	2455.00	
7.5	3600	213TC	89.7	89	208-230/460V	19.5-17.64/8.82	1.15	B	159	SS3-213TC2-XXX	2791.00	
	1800	213TC	91.7	84	208-230/460V	20.2-18.24/9.12	1.15	B	171	SS3-213TC4-XXX	2759.00	
10	3600	215TC	90.2	90	208-230/460V	25.5-23.06/11.53	1.15	B	177	SS3-215TC2-XXX	3059.00	
	1800	215TC	91.7	84	208-230/460V	26.9-24.32/12.16	1.15	B	208	SS3-215TC4-XXX	3016.00	
15	3600	254TC	91	89	208-230/460V	38.3-34.68/17.34	1.15	B	271	SS3-254TC2-XXX	7214.00	
	1800	254TC	92.4	83	208-230/460V	40.5-36.62/18.31	1.15	B	296	SS3-254TC4-XXX	7052.00	
20	3600	256TC	91	90	208-230/460V	50.6-45.74/22.87	1.15	B	322	SS3-256TC2-XXX	7542.00	
	1800	256TC	93	84	208-230/460V	53-47.94/23.97	1.15	B	347	SS3-256TC4-XXX	7375.00	
25	3600	284TSC	91.7	89	208-230/460V	63.4-57.36/28.7	1.15	B	428	SS3-284TDC2-XXX	P.O.R.	
	1800	284TC	93.6	86	208-230/460V	64.3-58.16/29.1	1.15	B	451	SS3-284TC4-XXX	P.O.R.	
30	3600	286TSC	91.7	89	208-230/460V	76.1-68.84/34.4	1.15	B	474	SS3-286TSC2-XXX	P.O.R.	
	1800	286TC	93.6	86	208-230/460V	77.2-69.8/34.9	1.15	B	482	SS3-286TC4-XXX	P.O.R.	

575 VOLTS AMPS = 460 VOLTS AMPS X 0.80

ALSO AVAILABLE IN 140TC FRAME

XXX= VOLTAGE CODE: 2X4 = 230/460

575 = 575 V.



56C Frame Stainless Steel – 1-Phase and 3-Phase

NEMA AC Footed and Round Body Performance Data and Mounting Dimensions

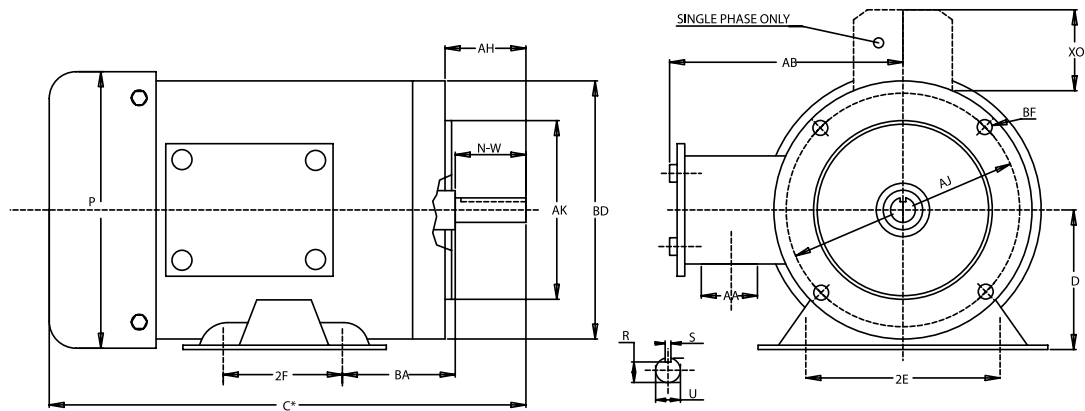
1-Phase 56C Frame Stainless Steel

HP	RPM	Frame	Volt	Phase	HZ	Amps 230V	LRT %	BDT %	LRA %	EFF %	PF %	C DIM	lbs	Encl
1/3	3450	56C	115/230	1	60	2.4	293	209	543	67	82	10.6	23	TEFC
	1720	56C	115/230	1	60	2.8	280	230	490	68	58	10.6	23	TEFC
1/2	3450	56C	115/230	1	60	3.1	360	180	658	63	83	10.6	24	TEFC
	1720	56C	115/230	1	60	4.1	320	220	512	61	65	11.0	24	TEFC
3/4	3450	56C	115/230	1	60	4.5	310	170	587	63	84	11.0	26.5	TEFC
	1720	56C	115/230	1	60	4.9	280	220	612	72	68	11.7	23.5	TEFC
1	3450	56C	115/230	1	60	6.2	270	184	709	64	84	11.7	31.5	TEFC
	1720	56C	115/230	1	60	6.8	270	230	618	69	69	12.2	33	TEFC
1.5	3450	56C	115/230	1	60	8.8	270	190	647	65	84	12.2	35	TEFC
	1720	56C	115/230	1	60	9.5	250	220	663	73	69	13.1	38.5	TEFC
2	3450	56HC	115/230	1	60	10.8	240	210	759	72	84	14.0	50	TEFC
	1720	56HC	115/230	1	60	9	190	190	733	76	95	14.0	48	TEFC

3-Phase 56C Frame Stainless Steel

HP	RPM	Frame	Volt	Phase	HZ	Amps 460V	LRT %	BDT %	LRA %	EFF %	PF %	C DIM	lbs	Encl
1/3	3400	56C	230/460	3	60	0.58	200	221	568	67	88	8.9	23	TENV
	1700	56C	230/460	3	60	0.65	320	380	785	72	66	9.4	22	TENV
1/2	3400	56C	230/460	3	60	0.8	230	250	680	75	85	8.9	25	TENV
	1700	56C	230/460	3	60	0.85	270	360	776	78	70	9.4	23.5	TENV
3/4	3400	56C	230/460	3	60	1.1	210	250	663	80	80	8.9	30	TENV
	1700	56C	230/460	3	60	1.2	270	340	825	79	75	9.4	31	TENV
1	3400	56HC	230/460	3	60	1.3	240	230	807	80	85	11.2	38	TEFC
	1700	56HC	230/460	3	60	1.5	300	380	906	81	75	12.8	38	TEFC
1.5	3400	56HC	230/460	3	60	1.85	200	240	843	82.5	85	12.8	45	TEFC
	1700	56HC	230/460	3	60	2.3	300	330	878	82.5	72	12.8	45	TEFC
2	3400	56HC	230/460	3	60	2.45	170	230	829	84	87	12.8	47	TEFC
	1700	56HC	230/460	3	60	2.9	290	300	828	84	75	12.8	51	TEFC
3	3400	56HC	230/460	3	60	3.8	350	360	1020	80	83	12.8	51	TEFC

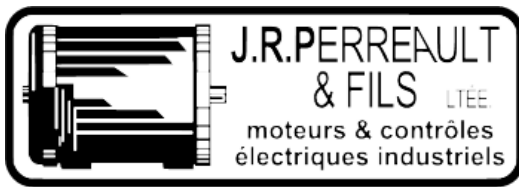
575 VOLTS AMPS, MULTIPLY 460 VOLTS BY 0.80



Frame	PH	D	2E	2F	BA	N-W	R	S	U	AH	AJ	AK	BF	AA	AB	BD	P	X0
56C	1	3.5	4.88	3	2.75	1-7/8	33/64	3/16	5/8	2 1/16	5-7/8	4 1/2	3/8-16	0.87	5 5/16	6 19/32	7 1/10	1.72
56C	3	3.5	4.88	3	2.75	1-7/8	33/64	3/16	5/8	2 1/16	5-7/8	4 1/2	3/8-16	0.87	5 5/16	6 19/32	7 1/10	-

C Dimension included in performance data.

Fractional 3-Phase motors in their standard version have neither fan nor fan guard (TENV).



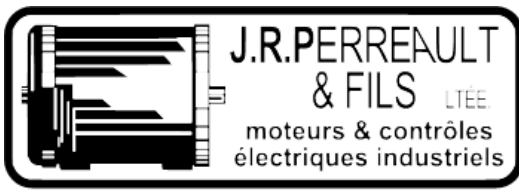
Premium Stainless Steel – 143TC-286TC 3-Phase

NEMA AC Footed and Round Body Performance Data

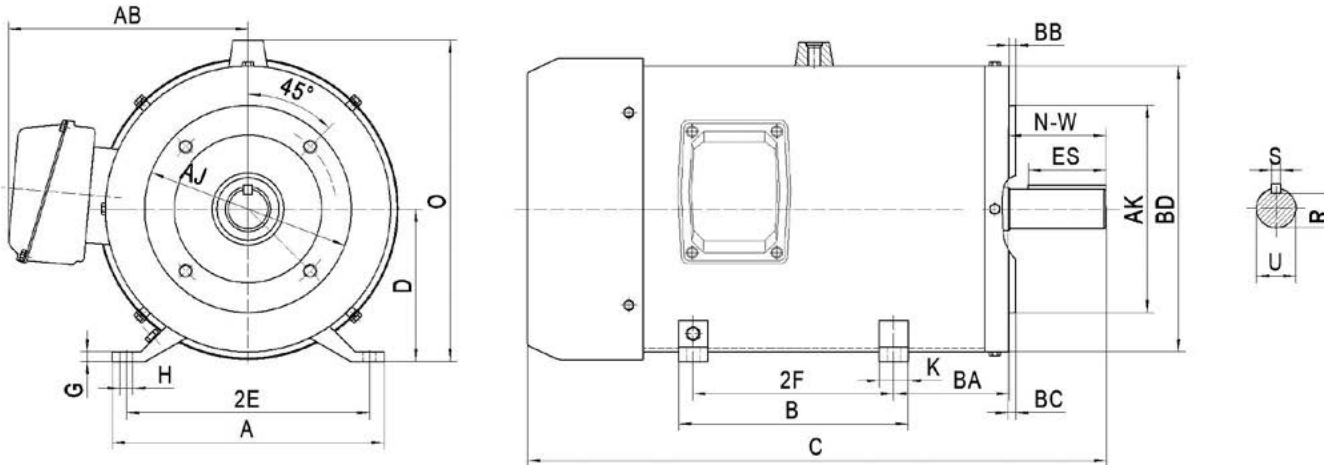
HP	RPM	Frame	CONN	Torque			IDLE 460V	FLA 460V	LRA 460V	Efficiency			Power Factor			NEMA Design	Code	SF	lbs
				FLT lb-ft	LRT %	BDT %				FL	75%	50%	FL	75%	50%				
1	3600	143TC	2Y/Y	1.53	185	250	0.63	15	15	77	81.1	79.73	84	84.96	75.53	B	J	1.15	44
	1800	143TC	2Y/Y	3.05	275	300	1.06	15	15	85.5	84.76	83.2	75	71.94	59.16	B	G	1.15	44
1.5	3600	143TC	2Y/Y	2.29	175	250	0.87	20	20	84	85.05	84.71	84	86.2	77.77	B	H	1.15	53
	1800	145TC	2Y/Y	4.59	250	280	1.34	20	20	86.5	86.35	85.13	79	75.5	63.49	B	G	1.15	53
2	3600	145TC	2Y/Y	3.07	170	240	0.91	25	25	85.5	86.15	86.12	86	89.24	82.72	B	G	1.15	55
	1800	145TC	2Y/Y	6.11	235	270	1.64	25	25	86.5	86.82	86.25	80	76.83	65.21	B	G	1.15	59
3	3600	182TC	2Y/Y	4.49	160	230	1.46	32	32	86.5	87.25	86.36	87	88.65	81.8	B	J	1.15	98
	1800	182TC	2Y/Y	8.94	215	250	2.53	32	32	89.5	89.42	88.18	80	75.25	63.24	B	J	1.15	100
5	3600	184TC	2Y/Y	7.51	150	215	2.26	46	46	88.5	88.91	88.63	88	89.55	83.35	B	H	1.15	107
	1800	184TC	2Y/Y	14.94	185	225	3.52	46	46	89.5	89.32	88.61	80	79.82	69.39	B	H	1.15	108
7.5	3600	213TC	2Δ/Δ	11.2	140	200	1.72	63.5	63.5	89.7	89.82	89.45	89	89.95	84.62	B	G	1.15	159
	1800	213TC	2Δ/Δ	22.41	175	215	3.65	63.5	63.5	91.7	91.63	91.12	84	81.9	73.06	B	G	1.15	171
10	3600	215TC	2Δ/Δ	14.94	135	200	1.88	81	81	90.2	90.76	90.25	90	91.66	87.78	B	G	1.15	177
	1800	215TC	2Δ/Δ	29.87	165	200	4.1	81	81	91.7	91.85	91.41	84	83.64	75.83	B	G	1.15	208
15	3600	254TC	2Δ/Δ	22.15	180	240	4.35	116	116	91	91.17	90	89	89	83.5	B	G	1.15	271
	1800	254TC	2Δ/Δ	44.68	185	220	7.75	116	116	92.4	92.42	91.61	83	81.4	71.4	B	F	1.15	296
20	3600	256TC	2Δ/Δ	29.54	160	220	5.17	145	145	91	91.25	91.21	90	90.8	87	B	G	1.15	322
	1800	256TC	2Δ/Δ	59.58	180	220	9.2	145	145	93	92.45	92.28	84	85	77.6	B	G	1.15	347
25	3600	284TSC	2Δ/Δ	36.92	170	220	6.6	182.5	182.5	91.7	92.05	91.76	89	89.9	85.1	B	F	1.15	428
	1800	284TC	2Δ/Δ	74.26	170	220	10.5	182.5	182.5	93.6	93.42	92.66	86	83.4	74.7	B	G	1.15	451
30	3600	286TSC	2Δ/Δ	44.31	170	230	7.7	217.5	217.5	91.7	92.1	92.07	89	90.2	85.7	B	E	1.15	474
	1800	286TC	2Δ/Δ	89.11	170	220	12	217.5	217.5	93.6	93.29	93.12	86	84.5	76.5	B	G	1.15	482

575 VOLTS AMPS = 460 VOLTS AMPS X 0.80
 ALSO AVAILABLE IN 140TC FRAME

XXX= VOLTAGE CODE: 2X4 = 230/460
 575 = 575 V.



Premium Stainless Steel – 143TC-286TC 3-Phase NEMA AC Footed and Round Body Mounting Dimensions



Frame	Mounting			A	B	C	D	G	H	O	P	R	S	AB	Shaft Extension			Bearing	
	2E	2F	BA												N-W	U	V	DE	ODE
143TC	5.5	4	2.75	6.4	4.96	12.6	3.5	0.08	0.35	7	7	0.768	0.188	6.1	2.25	0.886	2	6205	6205
145TC	5.5	5	2.75	6.4	6.4	15.2	3.5	0.08	0.35	7	7	0.768	0.188	6.1	2.25	0.886	2	6205	6205
182TC	7.5	4.5	3.5	9	6.1	16	4.5	0.16	0.43	9	8.7	0.98	0.25	7.1	2.75	1.125	2.5	6306	6306
184TC	7.5	5.5	3.5	9	7.1	17	4.5	0.16	0.43	9	8.7	0.98	0.25	7.1	2.75	1.125	2.5	6306	6306
213TC	8.5	5.5	4.25	10.5	8.5	20.5	5.25	0.16	0.43	10.4	10.4	1.181	0.315	8.27	3.38	1.378	3.12	6208	6208
215T	8.5	7	4.25	10.5	8.5	22	5.25	0.16	0.43	10.4	10.4	1.181	0.315	8.27	3.38	1.378	3.12	6208	6208
254TC	10	8.25	4.75	11.2	10.6	23.8	6.25	0.39	0.53	13.2	12.5	1.417	0.375	9.84	4	1.625	3.75	6309	6309
256TC	10	10	4.75	11.2	12.36	25.4	6.25	0.39	0.53	13.2	12.5	1.417	0.375	9.84	4	1.625	3.75	6309	6309
284TSC	11	9.5	4.75	12.2	11.08	25.2	7	0.47	0.53	14.8	14	1.417	0.375	9.84	3.25	1.625	3	6310	6310
284TC	11	9.5	4.75	12.2	11.08	26.6	7	0.47	0.53	14.8	14	1.591	0.5	9.84	4.62	1.875	4.38	6310	6310
286TSC	11	11	4.75	12.2	12.57	26.2	7	0.47	0.53	14.8	14	1.417	0.375	9.84	3.25	1.625	3	6310	6310
286TC	11	11	4.75	12.2	12.57	27.6	7	0.47	0.53	14.8	14	1.591	0.5	9.84	4.62	1.875	4.38	6310	6310

Frame	AJ	AK	BA	Min BB	BC	Max BD	# of Holes	Screw	Depth of Hole	U	AH	Keyway		
												R	ES	S
143TC	5.875	4.5	2.75	0.16	+0.12	6.5	4	3/8-16	0.56	0.886	2.12	0.768	1.41	0.188
145TC	5.875	4.5	2.75	0.16	+0.12	6.5	4	3/8-16	0.56	0.886	2.12	0.768	1.41	0.188
182TC	7.25	8.5	3.5	0.25	+0.12	9	4	1/2-13	0.75	1.125	2.62	0.98	1.78	0.25
184TC	7.25	8.5	3.5	0.25	+0.12	9	4	1/2-13	0.75	1.125	2.62	0.98	1.78	0.25
213TC	7.25	8.5	4.25	0.25	+0.25	9	4	1/2-13	0.75	1.378	3.12	1.181	2.41	0.315
215T	7.25	8.5	4.25	0.25	+0.25	9	4	1/2-13	0.75	1.378	3.12	1.181	2.41	0.315
254TC	7.25	8.5	4.75	0.25	+0.25	10	4	1/2-13	0.75	1.625	3.75	1.417	2.91	0.375
256TC	7.25	8.5	4.75	0.25	+0.25	10	4	1/2-13	0.75	1.625	3.75	1.417	2.91	0.375
284TSC	9	10.5	4.75	0.25	+0.25	11.25	4	1/2-13	0.75	1.625	3	1.417	1.91	0.375
284TC	9	10.5	4.75	0.25	+0.25	11.25	4	1/2-13	0.75	1.875	4.38	1.591	3.28	0.5
286TSC	9	10.5	4.75	0.25	+0.25	11.25	4	1/2-13	0.75	1.625	3	1.417	1.91	0.375
286TC	9	10.5	4.75	0.25	+0.25	11.25	4	1/2-13	0.75	1.875	4.38	1.591	3.28	0.5

