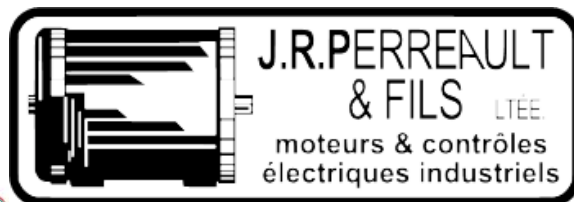


CANTONI
MOTOR



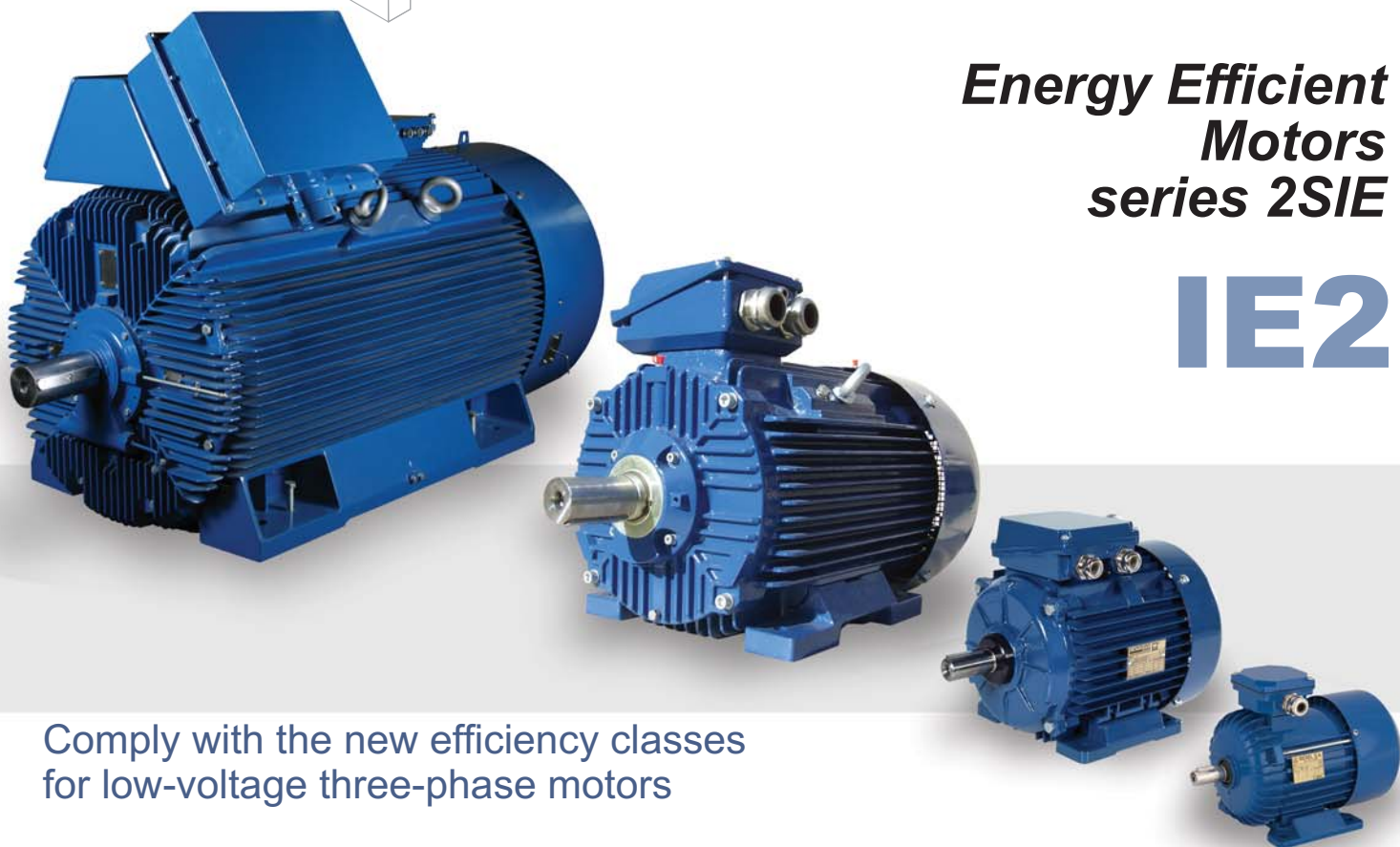
**General Purpose
3-phase
Induction Motors**



TELEPHONE
1-800-463-0400
www.jrperreault.com

**Energy Efficient
Motors
series 2SIE**

IE2



Comply with the new efficiency classes
for low-voltage three-phase motors

IEC 60034-30 standard and EU Regulation 640/2009

Product Catalogue

PRICE LIST:

MODEL	VOLT CODE	KW	RPM	FRAME	ENCL	LISTE
56-2A-	XXX	0.09	3600	56	TEFC	364.00 \$
56-4A	XXX	0.09	1800	56	TEFC	338.00 \$
56-2B	XXX	0.12	3600	56	TEFC	369.00 \$
63-4A	XXX	0.12	1800	63	TEFC	390.00 \$
63-6B	XXX	0.12	1200	63	TEFC	596.00 \$
71-8B	XXX	0.12	900	71	TEFC	692.00 \$
56X-2C	XXX	0.18	3600	56	TEFC	388.00 \$
63-2A	XXX	0.18	3600	63	TEFC	403.00 \$
63-4B	XXX	0.18	1800	63	TEFC	425.00 \$
71-6A	XXX	0.18	1200	71	TEFC	480.00 \$
71X-8C	XXX	0.18	900	71	TEFC	736.00 \$
80-8A	XXX	0.18	900	80	TEFC	785.00 \$
63-2B	XXX	0.25	3600	63	TEFC	419.00 \$
63X-4C	XXX	0.25	1800	63	TEFC	445.00 \$
71-4A	XXX	0.25	1800	71	TEFC	484.00 \$
71-6B	XXX	0.25	1200	71	TEFC	526.00 \$
80-8B	XXX	0.25	900	80	TEFC	844.00 \$
63X-2C	XXX	0.37	3600	63	TEFC	462.00 \$
71-2A	XXX	0.37	3600	71	TEFC	484.00 \$
71-4B	XXX	0.37	1800	71	TEFC	515.00 \$
71X-6C	XXX	0.37	1200	71	TEFC	544.00 \$
80-6A	XXX	0.37	1200	80	TEFC	620.00 \$
80X-8C	XXX	0.37	900	80	TEFC	948.00 \$
90S-8	XXX	0.37	900	90	TEFC	P.O.R.
71-2B	XXX	0.55	3600	71	TEFC	525.00 \$
71X-4C	XXX	0.55	1800	71	TEFC	590.00 \$
80-4A	XXX	0.55	1800	80	TEFC	592.00 \$
80-6B	XXX	0.55	1200	80	TEFC	694.00 \$
80X-8B	XXX	0.55	900	80	TEFC	1 048.00 \$
90L-8	XXX	0.55	900	90	TEFC	P.O.R.
71X-2C	XXX	0.75	3600	71	TEFC	568.00 \$
80-2A	XXX	0.75	3600	80	TEFC	625.00 \$
80-4B	XXX	0.75	1800	80	TEFC	644.00 \$
80X-6C	XXX	0.75	1200	80	TEFC	808.00 \$
90S-6	XXX	0.75	1200	90	TEFC	960.00 \$
100L-8A	XXX	0.75	900	100	TEFC	P.O.R.
80-2B	XXX	1.1	3600	80	TEFC	678.00 \$
80X-4C	XXX	1.1	1800	80	TEFC	758.00 \$
90S-4	XXX	1.1	1800	90	TEFC	920.00 \$
80X-6D	XXX	1.1	1200	80	TEFC	1 062.00 \$
90L-6	XXX	1.1	1200	90	TEFC	1 048.00 \$
100L-8B	XXX	1.1	900	100	TEFC	P.O.R.
80X-2C	XXX	1.5	3600	80	TEFC	788.00 \$
90S-2	XXX	1.5	3600	90	TEFC	896.00 \$
80X-4D	XXX	1.5	1800	80	TEFC	830.00 \$
90L-4	XXX	1.5	1800	90	TEFC	1 016.00 \$
90L-6	XXX	1.5	1200	90	TEFC	P.O.R.
100L-6	XXX	1.5	1200	100	TEFC	1 160.00 \$
112M-8	XXX	1.5	900	112	TEFC	P.O.R.
80X-2D	XXX	2.2	3600	80	TEFC	868.00 \$
90L-2	XXX	2.2	3600	90	TEFC	1 112.00 \$
90L-4	XXX	2.2	1800	90	TEFC	875.00 \$
100L-4A	XXX	2.2	1800	100	TEFC	1 144.00 \$
112M-6	XXX	2.2	1200	112	TEFC	1 472.00 \$
132S-8	XXX	2.2	900	132	TEFC	P.O.R.
90L-2	XXX	3	3600	90	TEFC	971.00 \$
100L-2	XXX	3	3600	100	TEFC	1 232.00 \$
100L-4B	XXX	3	1800	100	TEFC	1 320.00 \$
112M-6	XXX	3	1200	112	TEFC	P.O.R.
132S-6	XXX	3	1200	132	TEFC	1 984.00 \$
132M-8	XXX	3	900	132	TEFC	P.O.R.
100L-2	XXX	4	3600	100	TEFC	1 265.00 \$
112M-2	XXX	4	3600	112	TEFC	1 352.00 \$
100L-4	XXX	4	1800	100	TEFC	1 277.00 \$
112M-4	XXX	4	1800	112	TEFC	1 400.00 \$
132M-6A	XXX	4	1200	132	TEFC	2 320.00 \$
160M-8A	XXX	4	900	160	TEFC	P.O.R.
112M-2	XXX	5.5	3600	112	TEFC	1 795.00 \$
132S-2A	XXX	5.5	3600	132	TEFC	1 808.00 \$
112M-4A	XXX	5.5	1800	112	TEFC	1 775.00 \$
132S-4	XXX	5.5	1800	132	TEFC	2 056.00 \$
132M-6B	XXX	5.5	1200	132	TEFC	2 944.00 \$
160M-8B	XXX	5.5	900	160	TEFC	P.O.R.

VOLTAGE CODE:
57S: 575 VOLTS
2X4: 230/460 VOLTS

MODEL	VOLT CODE	KW	RPM	FRAME	ENCL	LISTE
112M-2B	XXX	7.5	3600	112	TEFC	2 074.00 \$
132S-2B	XXX	7.5	3600	132	TEFC	2 088.00 \$
132M-4	XXX	7.5	1800	132	TEFC	2 456.00 \$
132M-6	XXX	7.5	1200	132	TEFC	P.O.R.
160M-6	XXX	7.5	1200	160	TEFC	3 640.00 \$
160L-8	XXX	7.5	900	160	TEFC	P.O.R.
132M-2A	XXX	11	3600	132	TEFC	3 158.00 \$
160M-2A	XXX	11	3600	160	TEFC	2 912.00 \$
132M-4A	XXX	11	1800	132	TEFC	3 225.00 \$
160M-4	XXX	11	1800	160	TEFC	3 948.00 \$
160L-6	XXX	11	1200	160	TEFC	4 928.00 \$
160L-8Z	XXX	11	900	160	TEFC	P.O.R.
180L-8	XXX	11	900	180	TEFC	P.O.R.
160M-2B	XXX	15	3600	160	TEFC	3 448.00 \$
160L-4	XXX	15	1800	160	TEFC	3 656.00 \$
160L-6Z	XXX	15	1200	160	TEFC	5 425.00 \$
180L-6	XXX	15	1200	180	TEFC	6 222.00 \$
180L-8Z	XXX	15	900	180	TEFC	P.O.R.
200L-8	XXX	15	900	200	TEFC	P.O.R.
160L-2	XXX	18.5	3600	160	TEFC	4 160.00 \$
160L-4Z	XXX	18.5	1800	160	TEFC	5 112.00 \$
180M-4	XXX	18.5	1800	180	TEFC	4 464.00 \$
180L-6Z	XXX	18.5	1200	180	TEFC	6 725.00 \$
200L-6A	XXX	18.5	1200	200	TEFC	P.O.R.
200L-8Z	XXX	18.5	900	200	TEFC	P.O.R.
225S-8	XXX	18.5	900	225	TEFC	P.O.R.
160L-2Z	XXX	22	3600	160	TEFC	5 770.00 \$
180M-2	XXX	22	3600	180	TEFC	5 024.00 \$
180L-4	XXX	22	1800	180	TEFC	5 560.00 \$
200L-6B	XXX	22	1200	200	TEFC	P.O.R.
225M-8	XXX	22	900	225	TEFC	P.O.R.
180L-2	XXX	30	3600	180	TEFC	7 247.00 \$
200L-2A	XXX	30	3600	200	TEFC	8 945.00 \$
180L-4	XXX	30	1800	180	TEFC	7 425.00 \$
200L-4	XXX	30	1800	200	TEFC	9 422.00 \$
200L-6Z	XXX	30	1200	200	TEFC	P.O.R.
225M6	XXX	30	1200	225	TEFC	P.O.R.
225M-8Z	XXX	30	900	225	TEFC	P.O.R.
250M-8	XXX	30	900	250	TEFC	P.O.R.
200L-2B	XXX	37	3600	200	TEFC	9 750.00 \$
200L-4AZ	XXX	37	1800	200	TEFC	10 620.00 \$
225S-4	XXX	37	1800	225	TEFC	12 755.00 \$
225M-6AZ	XXX	37	1200	225	TEFC	P.O.R.
250M-6	XXX	37	1200	250	TEFC	P.O.R.
250M-8Z	XXX	37	900	250	TEFC	P.O.R.
S200L-2BZ	XXX	45	3600	200	TEFC	11 255.00 \$
225M-2	XXX	45	3600	225	TEFC	13 544.00 \$
200L-4BZ	XXX	45	1800	200	TEFC	11 102.00 \$
225M-4	XXX	45	1800	225	TEFC	13 183.00 \$
250M-6AZ	XXX	45	1200	225	TEFC	P.O.R.
280S-6	XXX	45	1200	280	TEFC	P.O.R.
280M-8	XXX	45	900	280	TEFC	P.O.R.
225M-2Z	XXX	55	3600	225	TEFC	14 991.00 \$
250M-2	XXX	55	3600	250	TEFC	16 754.00 \$
225M-4Z	XXX	55	1800	225	TEFC	15 471.00 \$
250M-4	XXX	55	1800	250	TEFC	16 842.00 \$
250M-6BZ	XXX	55	1200	250	TEFC	P.O.R.
280M-6	XXX	55	1200	280	TEFC	P.O.R.
250M-2Z	XXX	75	3600	250	TEFC	16 745.00 \$
280S-2	XXX	75	3600	280	TEFC	20 155.00 \$
250M-4Z	XXX	75	1800	250	TEFC	17 263.00 \$
280S-4	XXX	75	1800	280	TEFC	19 145.00 \$
280M-2	XXX	90	3600	280	TEFC	21 109.00 \$
280M-4	XXX	90	1800	280	TEFC	20 885.00 \$
315M-6A	XXX	90	1200	315	TEFC	P.O.R.
280M-2Z	XXX	110	3600	280	TEFC	25 963.00 \$
315S-2	XXX	110	3600	315	TEFC	34 854.00 \$
280M-4Z	XXX	110	1800	280	TEFC	24 499.00 \$
315S-4	XXX	110	1800	315	TEFC	32 477.00 \$
315M-2A	XXX	132	3600	315	TEFC	38 411.00 \$
315M-4A	XXX	132	1800	315	TEFC	35 273.00 \$
315M-2B	XXX	160	3600	315	TEFC	48 751.00 \$
315M-4B	XXX	160	1800	315	TEFC	47 852.00 \$
315M-2C	XXX	200	3600	315	TEFC	52 884.00 \$
315M-4C	XXX	200	1800	315	TEFC	50 645.00 \$

CANTONI IEC 1 PH.

TYPE	MODEL	VOLT CODE	KW	RPM	FRAME	ENCL	LISTE
SEMg-	56-4C/179	1X2	0.09	1800	56	TEFC	469.00 \$
SEMg-	56-2C/179	1X2	0.12	3600	56	TEFC	465.00 \$
SEMg-	63-4C/179	1X2	0.18	1800	63	TEFC	500.00 \$
SEMg-	63-2C/179	1X2	0.25	3600	63	TEFC	532.00 \$
SEMh-	71-4B/179	1X2	0.25	1800	71	TEFC	558.00 \$
SEMh-	71-2B/179	1X2	0.37	3600	71	TEFC	585.00 \$
SEMh-	71-4C/179	1X2	0.37	1800	71	TEFC	625.00 \$
SEMh-	71-2C/179	1X2	0.55	3600	71	TEFC	625.00 \$
SEMh-	80-4B/179	1X2	0.55	1800	80	TEFC	742.00 \$
SEMh-	80-2B/179	1X2	0.75	3600	80	TEFC	735.00 \$
SEMh-	80-4C/179	1X2	0.75	1800	80	TEFC	855.00 \$
SEMh-	90-4S/179	1X2	0.75	1800	90	TEFC	932.00 \$
SEMh-	80-2C/179	1X2	1.1	3600	80	TEFC	825.00 \$
SEMh-	90-2S/179	1X2	1.1	3600	90	TEFC	858.00 \$
SEMh-	90-4L/179	1X2	1.1	1800	90	TEFC	1 043.00 \$
SEMh-	90-2L/179	1X2	1.5	3600	90	TEFC	938.00 \$
SEhR-	90-4LF	230	1.5	1800	90	TEFC	1 185.00 \$
SEhR-	90-2LF	230	2.2	3600	90	TEFC	1 285.00 \$
SEhR-	90-4MF	230	2.2	1800	90	TEFC	1 285.00 \$
SEhR-	90-2MF	230	2.7	3600	90	TEFC	1 395.00 \$

VOLT CODE:
1X2= 115/230 VOLTS
230= 230 VOLTS, 1 PH.



IEC FLANGES

FRAME	MODEL	LISTE
56	B5	72.00 \$
56	B14	72.00 \$
63	B5	80.00 \$
63	B14	80.00 \$
71	B5	96.00 \$
71	B14	96.00 \$
80	B5	120.00 \$
80	B14	120.00 \$
90	B5	150.00 \$
90	B14	150.00 \$
100	B5	225.00 \$
100	B14	225.00 \$
112	B5	275.00 \$
112	B14	275.00 \$
132	B5	325.00 \$
132	B14	325.00 \$
160	B5	550.00 \$
160	B14	550.00 \$
180	B5	625.00 \$
200	B5	900.00 \$
225	B5	1 550.00 \$
250	B5	1 750.00 \$
280	B5	2 850.00 \$
315	B5	3 970.00 \$

DECREASE FLANGE

MOTOR FRAME	FLANGE SIZE	LISTE
90	71	125.00 \$
90	80	125.00 \$
100	71	200.00 \$
100	80	200.00 \$
100	90	200.00 \$
112	80	250.00 \$
112	90	250.00 \$
132	112	280.00 \$
160	132	525.00 \$

METRIC IEC Standard Efficiency 0.08-1.5 HP (0.06-1.1 kW)

Performance Data

50 Hz Performance Data

HP	RPM	Frame	kW	Torque			FLA			LRA	Efficiency			Power Factor	WK ² kgm ²	Wt kg
				FLT Nm	LRT %	BDT %	230V	380V	400V		%	FL	75%			
0.08	1400	Sg 56-4A	0.06	0.409	180	200	0.43	0.25	0.25	330	55	52	44	66	0.00015	2.7
0.12	2800	Sg 56-2A	0.09	0.307	210	210	0.56	0.32	0.32	450	58	50	43	75	0.000076	3
	1380	Sg 56-4B		0.623	200	190	0.59	0.34	0.34	320	61	58	54	65	0.00019	2.9
0.17	2800	Sg 56-2B	0.12	0.409	180	210	0.6	0.35	0.35	480	63	58	50	83	0.000095	3.4
	1380	Sg 63-4A		0.83	200	200	0.7	0.4	0.4	320	64	60	56	72	0.00024	3.6
0.25	2760	Sg 63-2A	0.18	0.623	190	190	0.95	0.55	0.55	380	65	63	58	80	0.000175	3.6
	1380	Sg 63-4B		1246	200	200	1.1	0.65	0.65	320	64	62	60	70	0.00031	4.2
	890	Sh 71-6A		1.93	190	190	1.3	0.75	0.75	260	57	54	47	68	0.00074	4.9
0.33	2760	Sg 63-2B	0.25	0.865	200	200	1.1	0.65	0.65	400	68	65	62	83	0.000235	4.2
	1380	Sh 71-4A		1.73	200	200	1.5	0.85	0.85	300	66	63	60	68	0.00061	4.8
	860	Sh 71-6B		2.78	160	160	1.75	1	1	230	55	52	45	79	0.00095	5.8
0.5	2800	Sh 71-2A	0.37	1.262	220	220	1.73	1	1	440	71	69	67	77	0.000389	5
	1360	Sh 71-4B		2.598	210	200	2.1	1.2	1.2	310	68	65	62	72	0.00077	5.9
	910	Sh 80-6A		3.88	200	210	2.4	1.4	1.4	300	64	63	61	65	0.00169	7.3
0.75	2790	Sh 71-2B	0.55	1.883	200	210	2.35	1.35	1.35	400	75	72	69	82	0.000484	6
	1400	Sh 80-4A		3.75	210	210	2.95	1.7	1.7	360	70	68	62	68	0.00158	7.5
	900	Sh 80-6B		5.84	190	200	3.1	1.8	1.8	270	67	65	62	70	0.00207	8.6
1	2800	Sh 80-2A	0.75	2.56	270	260	3.3	1.9	1.9	450	74	72	66	80	0.000829	7.8
	1390	Sh 80-4B		5.15	210	210	3.5	2	2	400	75	73	67	73	0.0019	8.8
1.5	2780	Sg 80-2B	1.1	3.78	260	260	4.3	2.5	2.5	510	77	75	69	84	0.001005	9.1

60 Hz Performance Data

HP	RPM	Frame	kW	Torque			FLA			LRA	Efficiency			Power Factor	WK ² lb ft ²	Wt lbs
				FLT lb ft	LRT %	BDT %	230V	460V	575V		%	FL	75%			
0.08	1680	Sg 56-4A	0.06	0.25	210	220	0.44	0.22	0.18	330	55	52	44	66	0.002	5.9
0.12	3360	Sg 56-2A	0.09	0.19	220	220	0.56	0.28	0.22	450	58	50	43	75	0.001	6.6
	1660	Sg 56-4B		0.38	210	200	0.6	0.3	0.24	320	61	58	54	65	0.003	6.4
0.17	3360	Sg 56-2B	0.12	0.27	200	220	0.6	0.3	0.24	480	63	58	50	83	0.002	7.5
	1660	Sg 63-4A		0.54	210	210	0.7	0.35	0.28	320	64	60	56	72	0.004	7.9
0.25	3310	Sg 63-2A	0.18	0.4	200	200	1	0.5	0.4	380	65	63	58	80	0.003	7.9
	1660	Sg 63-4B		0.79	210	210	1.1	0.55	0.44	320	64	62	60	70	0.005	9.3
	1070	Sh 71-6A		1.23	200	200	1.4	0.7	0.56	260	57	54	47	68	0.012	10.8
0.33	3310	Sg 63-2B	0.25	0.52	210	210	1.1	0.55	0.44	400	68	65	62	83	0.004	9.3
	1660	Sh 71-4A		1.04	210	210	1.4	0.7	0.56	300	66	63	60	68	0.001	10.6
	1030	Sh 71-6B		1.63	200	200	1.8	0.9	0.72	230	55	52	45	70	0.002	12.8
0.5	3360	Sh 71-2A	0.37	0.78	200	210	1.8	0.9	0.72	440	71	69	67	68	0.006	11.7
	1630	Sh 71-4B		1.6	220	220	2	1	0.8	310	68	65	62	68	0.012	13
	1090	Sh 80-6A		2.43	200	220	2.4	1.2	0.96	300	64	63	61	64	0.027	16
0.75	3350	Sh 71-2B	0.55	1.18	210	220	2.4	1.2	0.96	400	75	72	69	85	0.008	13.2
	1680	Sh 80-4A		2.34	220	220	3	1.5	1.2	360	70	68	62	72	0.025	16.5
	1080	Sh 80-6B		3.65	200	210	3.2	1.6	1.28	270	67	65	62	72	0.033	19
1	3360	Sh 80-2A	0.75	1.56	280	270	3.2	1.6	1.28	450	74	72	66	80	0.013	17.2
	1670	Sh 80-4B		3.14	220	220	3.4	1.7	1.36	400	75	73	67	73	0.03	19.4
1.5	3340	Sg 80-2B	1.1	2.36	270	270	4.4	2.2	1.76	510	77	75	69	84	0.016	20.1

METRIC IEC High Efficiency Series – 1-220 HP (1.5-160 kW)

Performance Data

50 Hz Performance Data

HP	RPM	Frame	kW	Torque			FLA			LRA	Efficiency			Power Factor	Design	WK ² kgm ²	Wt kg
				FLT Nm	LRT %	BDT %	230V	380V	400V		%	FL	75%				
1	925	90S	.75	6.2	220	260	3.5	2.2	2	420	75.9	76.1	75.5	70	H	0.0025	16.5
1.5	1425	90S	1.1	6.2	240	280	4.5	2.8	2.6	510	81.4	81.9	81.1	76	H	0.0029	16.3
2	2880	90S	1.5	5	330	340	5.7	3.5	3.3	760	81.8	82	80	81	N	0.0014	13.9
	1425	90L		10	280	330	6	3.6	3.4	710	82.8	83.2	81.2	76	H	0.0036	19
3	2870	90L	2.2	7.3	370	370	8.2	4.9	4.7	730	83.5	84.4	83.4	81	N	0.0016	17.3
	1440	100L		14.8	240	280	7.9	4.7	4.5	810	84.7	85.5	84.6	83	H	0.007	26
	955	112M		22.4	230	270	8.9	5.4	5.1	700	82.3	83.1	82	75	H	0.0177	32
4	2915	100L	3	9.8	310	330	10.7	6.5	6.2	830	84.6	84.7	82.8	83	N	0.0039	26.7
	1445	100L		19.7	340	360	11.5	6.9	6.6	960	86	86.1	84.3	76	H	0.0077	30
	950	132S		30.2	200	270	11.4	6.9	6.6	550	83.3	84.3	83.1	79	H	0.025	54
5.5	2915	112M	4	13.1	240	270	13.4	8.1	7.7	850	86.3	87.3	86.9	87	N	0.006	33.5
	1450	112M		27	200	290	14.6	8.8	8.4	740	87	87.7	86.9	79	H	0.0115	36
	950	132M		40.2	220	280	14.7	8.8	8.4	630	84.6	85.6	84.9	81	H	0.032	66
7.5	2930	132S	5.5	17.9	270	340	17.5	10.6	10.1	880	87.5	89.2	88.5	90	N	0.014	59.5
	1460	132S		30	240	310	19.7	11.6	11.3	830	88	88.5	87.6	80	H	0.029	69
	950	132M		55.3	270	310	20.3	12.3	11.7	650	86	86.8	85.8	79	H	0.04	72
10	2920	132S	7.5	24.5	270	330	23.1	13.9	13.2	850	88.6	89.1	88.2	92	N	0.017	70.8
	1460	132M		48.8	240	330	26.5	16.1	15.3	860	88.7	89.2	88.5	80	H	0.036	74
	960	160M		74.2	230	310	26.6	16.1	15.3	770	87.4	88.5	88.2	81	H	0.072	100
15	2940	160M	11	35.7	200	270	35.3	21.4	20.3	720	90	90.3	89.4	87	N	0.042	96
	1470	160M		72.7	200	280	38	22.9	21.8	800	89.8	90.3	89.3	81	H	0.057	106
	960	160L		111.3	250	310	38	22.9	21.8	820	88.7	89.6	89.3	82	H	0.096	125
20	2935	160M	15	48.8	200	280	46.9	28.3	26.9	700	90.3	91	90.6	89	H	0.048	103
	1470	160L		96.9	210	300	51.3	31.1	29.5	820	90.6	91.3	90.7	81	N	0.07	126
	975	180L		146.1	280	240	51.2	30.9	29.4	720	89.7	90.1	89.1	82	H	0.22	170
25	2935	160L	18.5	60.2	230	290	55.8	33.8	32.1	770	91.5	92.3	92.2	91	N	0.059	118
	1470	180M		121.2	280	300	59.2	35.8	34	870	91.2	91.3	90.2	86	H	0.139	169
	990	200L		179.9	200	260	66	40	38	660	90.8	90.7	89.2	77	H	0.5	283
30	2945	180M	22	71.3	260	320	68.7	41.6	39.5	750	91.3	91.7	90.8	88	N	0.062	156
	1460	180L		146.4	280	290	70.1	42.4	40.3	850	91.6	92	91.4	86	H	0.144	180
	990	200L		215.9	180	240	77	46	44	620	91	91.1	90	79	H	0.57	294
40	2952	200L	30	97	200	260	91	55	52	630	92.3	92.7	92	90	N	0.15	265
	1474	200L		193.3	190	230	93	56	54	630	92.4	93.1	93	87	H	0.31	285
	990	225M		287.9	190	230	101	61	58	650	91.9	92.4	91.7	81	H	0.82	379
50	2954	200L	37	120	180	250	110	66	63	600	92.7	93.5	93.6	91	N	0.18	283
	1484	225S		240	200	270	117	71	67	750	93.2	93.5	92.9	85	H	0.49	368
	989	250M		357	160	230	119	72	68	530	92.5	93	92.5	84	H	1.39	458
60	2967	225M	45	145	150	280	135	82	78	620	93.1	93.6	93.2	90	N	0.26	380
	1485	225M		287.9	210	280	144	87	83	770	93.6	93.8	93	84	H	0.55	395
	992	280S		433	170	230	152	92	87	560	93	93	92	80	H	1.9	682
75	2959	250M	55	177	180	230	163	98	94	570	93.3	93.9	93.8	91	N	0.42	492
	1479	250M		361.3	180	210	164	99	94	690	93.5	93.9	93	90	H	0.79	478
	992	280M		538.6	170	220	250	110	105	670	93.4	94.2	93.4	81	H	2.93	983
100	2978	280S	75	241	150	290	220	133	127	690	94.1	94.4	94	91	N	0.76	655
	1489	280S		478.5	200	250	225	136	129	760	94.2	94.6	94.1	89	H	1.37	678
	992	315S6		722	170	220	250	152	144	560	94	94.2	93.4	80	H	2.93	983
125	2972	280M	90	289	150	240	264	160	152	650	94.2	94.2	93.4	91	N	0.95	688
	1486	280M		599.3	170	220	272	165	157	760	94.3	94.7	94.5	88	H	1.5	700
	992	315M		897.7	160	200	288	174	165	700	94.2	94.5	93.8	83	H	3.4	1073
150	1489	315S	110	717.7	200	250	324	196	186	750	94.6	95.1	95	90	H	1.85	905
	992	315M		1077.3	170	210	352	213	203	730	94.4	94.7	94.1	83	H	4.21	1181
220	1487	315M	160	1028	180	210	465	281	267	570	95.0	95.8	96.0	91	H	2.59	1047

METRIC IEC High Efficiency – 1-220 HP (1.5-160 kW)

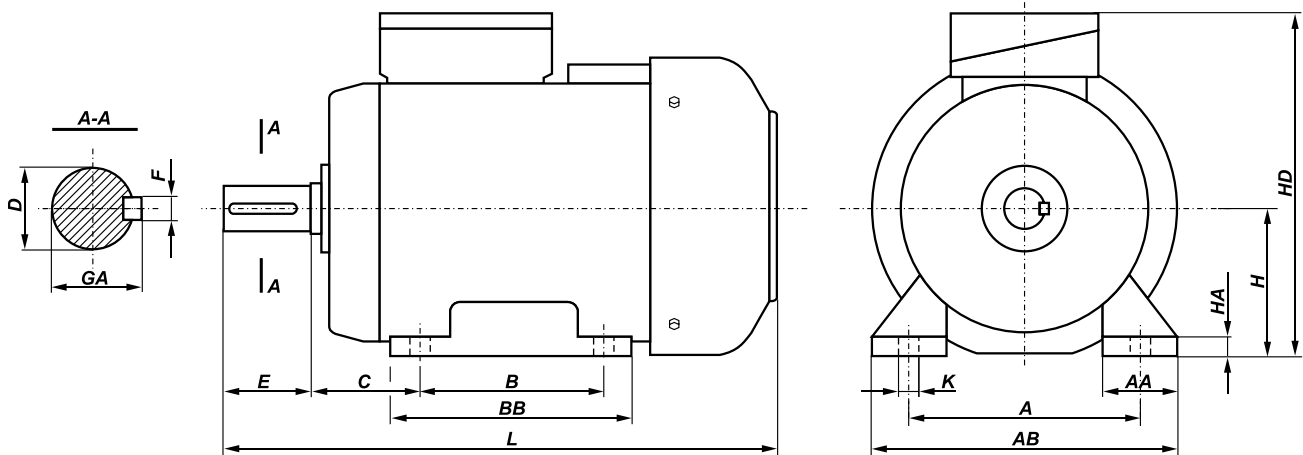
Performance Data

60 Hz Performance Data

HP	RPM	Frame	kW	Torque			FLA			LRA	Efficiency			Power Factor	Design	WK ² lb ft ²	Wt lbs
				FLT lb ft	LRT %	BDT %	230V	460V	575V		%	FL	75%				
1	1140	90S	.75	4.6	260	290	3.6	1.8	1.4	480	80	80.5	79.8	65	H	0.0398	37
1.5	1730	90S	1.1	4.6	290	320	4.6	2.3	1.8	650	84	84.3	82.3	72	H	0.0462	36
2	3490	90S	1.5	3	380	390	5.6	2.8	2.2	870	85.5	85.7	83.6	79	N	0.025	31
	1735	90L		6.2	290	420	6	3	2.4	710	84	84.4	82.4	74	H	0.0574	42
3	3470	90L	2.2	4.5	410	410	8	4	3.2	830	86.5	87.4	86.4	80	N	0.35	38
	1750	100L		8.9	280	330	8	4	3.2	810	87.5	88.3	87.4	79	H	0.112	57
	1170	112M		13.5	240	360	10.6	5.3	4.2	600	87.5	88.4	87.2	61	H	0.282	71
4	3530	100L	3	6	350	360	10.6	5.3	4.2	930	88.5	88.6	86.6	81	N	0.08	59
	1755	100L		12	380	390	11.6	5.8	4.6	840	87.5	87.6	85.8	74	H	0.123	67
	1165	132S		18	280	370	11.4	5.7	4.6	780	87.5	88.5	87.3	76	H	0.398	119
5.5	3525	112M	4	8	260	290	13.4	6.7	5.4	830	88.5	90	89.6	85	N	0.15	74
	1760	112M		16.1	260	330	14.8	7.4	5.9	740	87.5	88.2	87.4	78	H	0.183	79
	1160	132M		24	290	350	15	7.5	6	750	87.5	88.5	87.8	76	H	0.6	146
7.5	3535	132S	5.5	11.1	320	490	17.6	8.8	7	1010	89.5	91.2	90.5	88	N	0.3	132
	1770	132S		22.2	280	340	19.6	9.8	7.8	920	89.5	90	89.3	79	H	0.462	153
	1165	132M		33.8	300	380	22.4	11.2	9	840	89.5	90.3	89.3	77	H	0.636	159
10	3530	132S	7.5	15	310	370	23	11.5	9.2	850	90.2	90.7	89.8	91	N	0.3	156
	1770	132M		29.9	280	370	26.2	13.1	10.5	860	89.5	90	89.3	80	H	0.574	163
	1165	160M		45.4	440	330	26.2	13.1	10.5	770	89.5	90.6	90.3	80	H	1.15	221
15	3550	160M	11	22	240	300	35.2	17.6	14.1	830	91	91.3	90.4	86	N	0.7	212
	1765	160M		43.9	230	350	38	19	15.2	800	91	91.5	90.5	80	H	0.909	234
	1165	160L		66.6	280	350	37.4	18.7	15	820	90.2	91.1	90.8	82	H	1.53	276
20	3540	160M	15	29	230	300	46.4	23.2	18.6	820	91	91.7	91.3	89	H	0.8	227
	1765	160L		59.9	260	380	51.8	25.9	20.7	820	91	91.7	91.1	80	N	1.12	278
	1175	180L		90	330	280	51.6	25.8	20.6	720	90.2	90.6	89.6	81	H	3.51	375
25	3540	160L	18.5	36	240	340	56.2	28.1	22.5	900	91.7	92.5	92.4	90	N	1.05	260
	1775	180M		73.4	320	400	59.2	29.6	23.7	870	92.4	92.5	91.4	85	H	2.22	373
	1189	200L		109.2	240	260	62	31	24.8	670	91.7	91.9	90.4	81	H	7.98	624
30	3550	180M	22	43	280	330	69.2	34.6	27.7	870	91.7	92.1	91.2	87	N	1.3	345
	1770	180L		87.6	340	350	69.4	34.7	27.8	850	92.4	92.8	92.2	86	H	2.3	397
	1188	200L		129.9	240	250	74	37	29.6	660	91.7	92.2	91.1	82	H	9.09	649
40	3566	200L	30	59	290	320	90	45	36	850	92.4	92.8	92.1	90	N	2.47	585
	1776	200L		118.8	220	250	92	46	36.8	630	93	94.1	94	87	H	4.94	629
	1190	225M		177.1	210	240	98	49	39.2	710	93	93.5	92.8	83	H	13.08	836
50	3560	200L	37	73.7	220	280	112	56	44.8	760	93	93.6	93.7	89	N	3.91	624
	1786	225S		147	260	320	116	58	46.4	850	93.6	94	93.4	86	H	7.82	812
	1193	250M		220	240	310	124	62	49.6	840	93	93.5	93	81	H	22.1	1010
60	3576	225M	45	88.1	250	320	138	69	55.2	810	93.6	94.1	93.7	87	N	4.39	838
	1785	225M		176.5	250	310	140	70	56	850	93.6	94.1	93.3	86	H	8.77	871
	1193	280S		264	220	250	146	73	58.4	760	93.7	93.7	92.7	83	H	30.21	1504
75	3571	250M	55	110.3	200	300	164	82	65.6	770	93.6	94.2	94.1	90	N	6.3	1085
	1784	250M		220.7	220	270	164	82	65.6	640	94.1	94.1	93.2	90	H	12.6	1054
	1193	280M		324.6	240	260	182	91	72.8	800	93.6	95	94.2	81	H	46.73	1639
100	3581	280S	75	146.6	190	300	222	111	88.8	800	94.1	94.5	94.4	90	N	10.92	1444
	1789	280S		293.5	200	240	222	111	88.8	760	94.5	95.4	94.9	90	H	21.85	1495
	1193	315S		440	260	280	246	123	98.4	600	94.5	94.6	93.9	81	H	46.59	2168
125	3581	280M	90	183.2	190	300	264	132	105.6	800	95	95	94.2	90	N	11.96	1517
	1790	280M		354.1	240	290	268	134	107.2	820	94.5	95.7	95.5	89	H	23.93	1544
	1194	315M		531.1	290	290	294	147	117.6	720	94.6	95	94.3	81	H	54.23	2366
150	1789	315S	110	440	230	270	322	161	128.8	760	95	95.5	95.4	90	H	29.51	1996
	1193	315M		660	270	280	354	177	141.6	850	95	95.2	94.6	82	H	67.15	2604
220	1789	315M	160	646	240	280	468	234	188	840	95.5	96.0	96.2	90	H	41.3	2310

METRIC IEC Standard IM B3 Footed IEC56-180

Mounting Dimensions

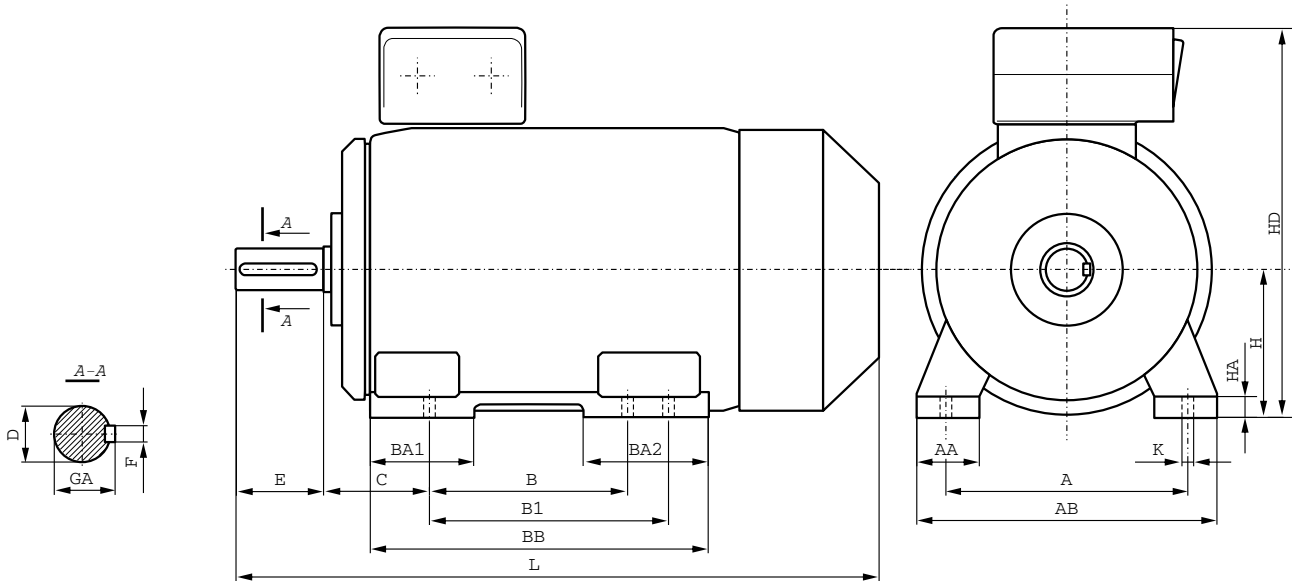


Series	Frame	A	B	C	D	E	F	GA	H	HA	K	AA	AB	BB	HD	L
M	Sg 56-2A	90	71	36	9	20	3	10.2	56	7	5.8	30	110	92	154	188
M	Sg 56-4A	90	71	36	9	20	3	10.2	56	7	5.8	30	110	92	154	149*
M	Sg 56-2B	90	71	36	9	20	3	10.2	56	7	5.8	30	110	92	154	196
M	Sg 56-4B	90	71	36	9	20	3	10.2	56	7	5.8	30	110	92	154	157*
M	Sg 56-6B	90	71	36	9	20	3	10.2	56	7	5.8	30	110	92	154	196
M	Sg 63-...A	100	80	40	11	23	4	12.5	63	8.5	7	36	124	106	165	202
M	Sg 63-...B	100	80	40	11	23	4	12.5	63	8.5	7	36	124	106	165	214
M	Sh 71-...A	112	90	45	14	30	5	16	71	8	7	45	142	116	182	223
M	Sh 71-...B	112	90	45	14	30	5	16	71	8	7	45	142	116	182	245
M	Sh 80-...A	125	100	50	19	40	6	21.5	80	9	10	55	160	130	200	266
M	Sh 80-...B	125	100	50	19	40	6	21.5	80	9	10	55	160	130	200	278
M	2SIE 90S -2,4,6	140	100	56	24j6	50	8h9	27	90	10	50	170	153	153	220	330
M	2SIE 90L -2	140	125	56	24j6	50	8h9	27	90	10	50	170	153	153	220	330
M	2SIE 90L -4,6	140	125	56	24j6	50	8h9	27	90	10	50	170	153	153	220	355
M	2SIE 100L -2,4A	160	140	63	28j6	60	8h9	31	100	12	45	200	172	172	240	420
M	2SIE 100L -4B	160	140	63	28j6	60	8h9	31	100	12	45	200	172	172	240	440
M	2SIE 100L -6	160	140	63	28j6	60	8h9	31	100	12	45	200	172	172	240	376
M	2SIE 112M -2,6	190	140	70	28j6	60	8h9	31	112	12	54	230	174	174	276	384
M	2SIE 112M-4	190	140	70	28j6	60	8h9	35	112	12	54	230	174	174	276	411
M	2SIE 132S -2A,6	216	140	89	38k6	80	10h9	41	132	12	56	278	182	182	310	463
M	2SIE 132S -2B,4	216	140	89	38k6	80	10h9	41	132	12	56	278	220	220	310	501
M	2SIE 132M -4,6A,6B	216	178	89	38k6	80	10h9	41	132	12	56	278	220	220	310	501
M	2SIE 160M -2A,2B,4,6	254	210	108	42k6	110	12h9	45	160	15	60	305	256	256	370	612
M	2SIE 160L -2,4,6	254	254	108	42k6	110	12h9	45	160	15	60	305	300	300	370	656
M	2SIE 180M -2,4	279	241	121	48k6	110	14h9	51.5	180	15	70	350	320	320	408	705
M	2SIE 180L -4,6	279	279	121	48k6	110	14h9	51.5	180	15	70	350	320	320	408	705

Units in millimeters and (...) regards all RPMs (2p=2,4,6).

METRIC IEC High Efficiency – IM B3 Footed IEC200-355

Mounting Dimensions

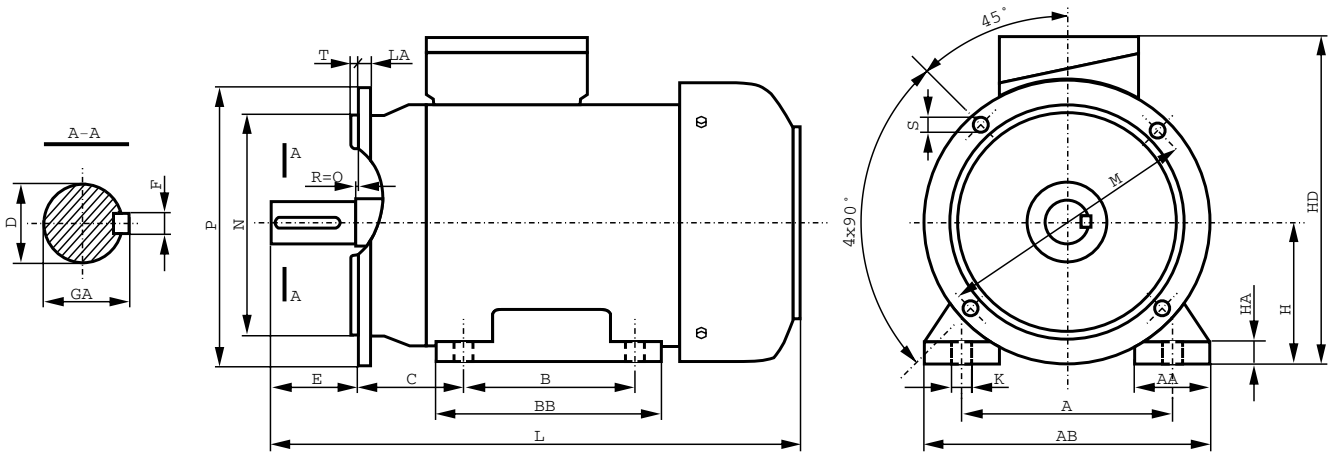


Frame	A	B	B1	C	D	E	F	GA	H	HA	K	AA	AB	BA1	BA2	BB	HD	L
2SIE 200	318	305	–	133	55	110	16	59	200	32	19	80	400	113	113	380	520	850
2SIE 225 S4	356	286	311	149	60	140	18	64	225	34	19	85	440	115	115	380	570	960
2SIE 225 M2	356	286	311	149	55	110	16	59	225	34	19	85	440	115	115	380	570	930
2SIE 225 M4-6	356	286	311	149	60	140	18	64	225	34	19	85	440	115	115	380	570	960
2SIE 250 M2	406	349	–	168	60	140	18	64	250	37	24	90	480	135	135	445	635	1010
2SIE 250 M4-6	406	349	–	168	65	140	18	69	250	37	24	90	480	135	135	445	635	1040
2SIE 280 S2	457	368	419	190	65	140	18	69	280	40	24	105	550	130	165	520	720	1135
2SIE 280 S4-6	457	368	419	190	75	140	20	79.5	280	40	24	105	550	130	165	520	720	1135
2SIE 280 M2	457	368	419	190	65	140	18	69	280	40	24	105	550	130	165	520	720	1135
2SIE 280 M4-6	457	368	419	190	75	140	20	79.5	280	40	24	105	550	130	165	520	720	1135
2SIE 315 S2	508	406	457	216	65	140	18	69	315	48	28	135	610	135	205	600	805	1325
2SIE 315 S4-6	508	406	457	216	80	170	22	85	315	48	28	135	610	135	205	600	805	1355
2SIE 315 M2A,B,C,D	508	406	457	216	65	140	18	69	315	48	28	135	610	135	205	600	805	1325
2SIE 315 M4-6A,B,C,D	508	406	457	216	80	170	22	85	315	48	28	135	610	135	205	600	805	1355
2SIE 315 ML (4,6)	508	457	508	216	80	170	22	85	315	40	28	120	620	150	180	637	865	1345
2SIE 355 ML (2)	610	560	630	254	80	170	22	85	355	50	28	150	720	250	300	890	935	1580
2SIE 355 ML (4,6)	610	560	630	254	100	210	28	106	355	50	28	150	720	250	300	890	935	1620
2SIE 355 H (2)	610	900	–	200	70	140	20	74.5	355	45	28	160	730	265	265	1045	995	1800
2SIE 355 H (4,6)	610	900	–	200	100	210	28	106	355	45	28	160	730	265	265	1045	995	1870

Units in millimeters and (...) regards all RPMs (2p=2,4,6).

METRIC IEC Standard IM B35 D-Flange IEC56-180

Mounting Dimensions

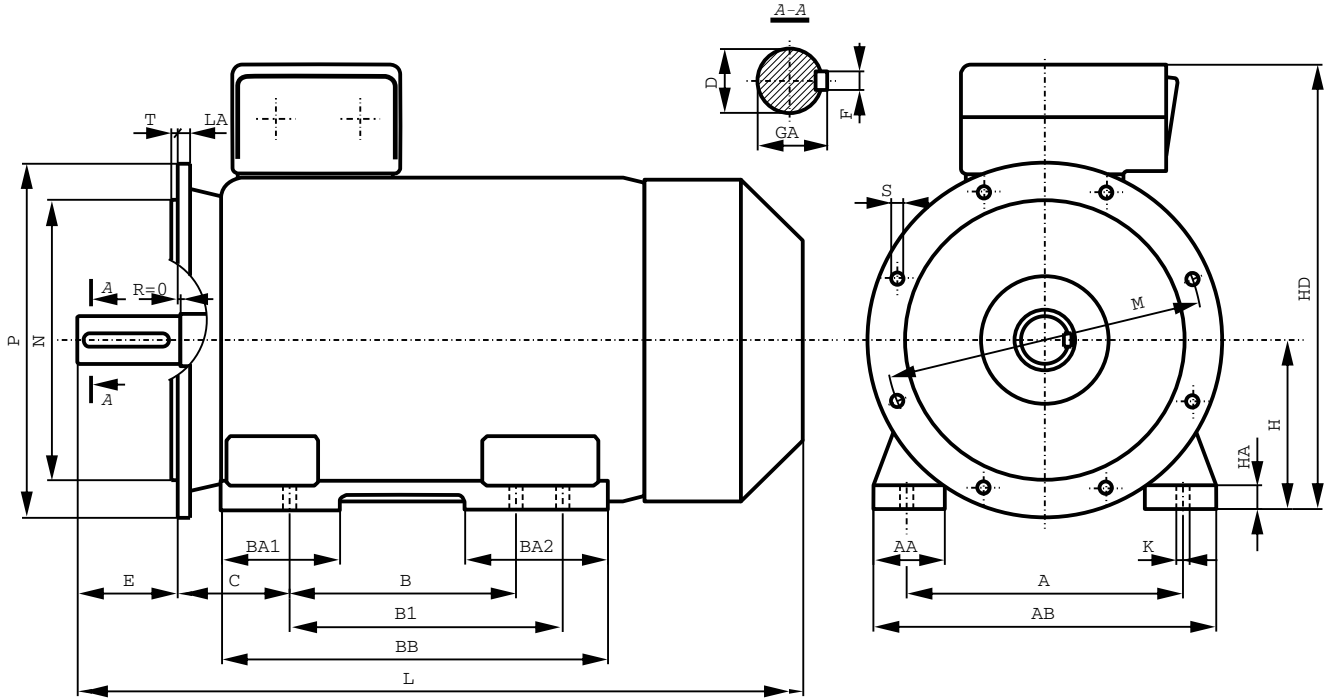


Series	Frame	A	B	C	D	E	F	GA	H	K	M	N	P	S	LA	T	AA	AB	BB	HA	HD
M	SLg 56-2A	90	71	36	9	20	3	10.2	56	8	100	80	120	7	8	3	30	110	92	7	154
M	SLg 56-4A	90	71	36	9	20	3	10.2	56	8	100	80	120	7	8	3	30	110	92	7	154
M	SLg 56-2B	90	71	36	9	20	3	10.2	56	8	100	80	120	7	8	3	30	110	92	7	154
M	SLg 56-4B	90	71	36	9	20	3	10.2	56	8	100	80	120	7	8	3	30	110	92	7	154
M	SLg 56-6B	90	71	36	9	20	3	10.2	56	8	100	80	120	7	8	3	30	110	92	7	154
M	SLg 63-A	100	80	40	11	23	4	12.5	63	10	115	95	140	10	9	3	36	124	106	8.5	165
M	SLg 63-...B	100	80	40	11	23	4	12.5	63	10	115	95	140	10	9	3	36	124	106	8.5	165
M	SLh 71-...A	112	90	45	14	30	5	16	71	10	130	110	160	10	9	3.5	45	142	116	8	182
M	SLh 71-...B	112	90	45	14	30	5	16	71	10	130	110	160	10	9	3.5	45	142	116	8	182
M	SLh 80-...A	125	100	50	19	40	6	21.5	80	10	165	130	200	12	10	3.5	55	160	130	9	200
M	SLh 80-...B	125	100	50	19	40	6	21.5	80	10	165	130	200	12	10	3.5	55	160	130	9	200
M	2SIEL 90S-2,4,6	140	100	56	24j6	50	8h9	27	90	10	165	130j6	200	12	8	3.5	50	170	153	10	220
M	2SIEL 90L-2	140	125	56	24j6	50	8h9	27	90	10	165	130j6	200	12	8	3.5	50	170	153	10	220
M	2SIEL 90L-4,6	140	125	56	24j6	50	8h9	27	90	10	165	130j6	200	12	8	3.5	50	170	153	10	220
M	2SIEL 100L-2,4A	160	140	63	28j6	60	8h9	31	100	12	215	180j6	250	15	11	4	45	200	172	14	240
M	2SIEL 100L-4B	160	140	63	28j6	60	8h9	31	100	12	215	180j6	250	15	11	4	45	200	172	14	240
M	2SIEL 100L-6	160	140	63	28j6	60	8h9	31	100	12	215	180j6	250	15	11	4	45	200	172	14	240
M	2SIEL 112M-2,6	190	140	70	28j6	60	8h9	31	112	12	215	180j6	250	15	12	4	54	230	174	14	276
M	2SIEL 112M-4	190	140	70	28j6	60	8h9	31	112	12	215	180j6	250	15	12	4	54	230	174	14	276
M	2SIEL 132S-2A,6	216	140	89	38k6	80	10h9	41	132	12	265	230j6	300	15	12	4	56	278	182	16	310
M	2SIEL 132S-2B,4	216	140	89	38k6	80	10h9	41	132	12	265	230j6	300	15	12	4	56	278	220	16	310
M	2SIEL 132M-4,6A,6B	216	178	89	38k6	80	10h9	41	132	12	265	230j6	300	15	12	4	56	278	220	16	310
M	2SIEL 160M-2A,2B,4,6	254	210	108	42k6	110	12h9	45	160	15	300	250j6	350	19	13	5	60	305	256	20	370
M	2SIEL 160L-2,4,6	254	254	108	42k6	110	12h9	45	160	15	300	250j6	350	19	13	5	60	305	300	20	370
M	2SIEL 180M-2,4	279	241	121	48k6	110	14h9	51.5	180	15	300	250j6	350	19	13	5	70	350	320	26	408
M	2SIEL 180L-4,6	279	279	121	48k6	110	14h9	51.5	180	15	300	250j6	350	19	13	5	70	350	320	26	408

Units in millimeters and (...) regards all RPMs (2p=2,4,6).

METRIC IEC High Efficiency – IM B35 D-Flange IEC200-355

Mounting Dimensions

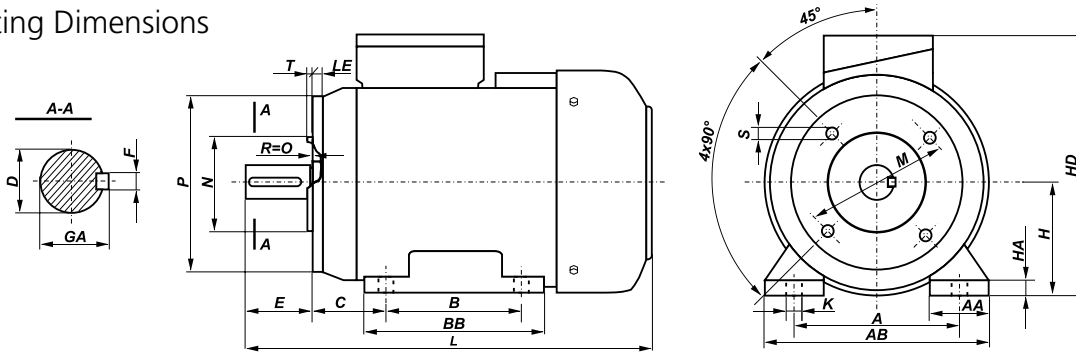


Frame	A	B	B1	C	D	E	F	GA	H	HA	K	AA	AB	BA1	BA2	BB	HD	LA	P	M	N	S	T	L
2SIEL 200	318	305	-	133	55	110	16	59	200	32	19	80	400	113	113	380	520	16.5	400	350	300	19	5	850
2SIEL 225S4	356	286	311	149	60	140	18	64	225	34	19	85	440	115	115	380	570	18	450	400	350	19	5	960
2SIEL 225M2	356	286	311	149	55	110	16	59	225	34	19	85	440	115	115	380	570	18	450	400	350	19	5	930
2SIEL 225M4-6	356	286	311	149	60	140	18	64	225	34	19	85	440	115	115	380	570	18	450	400	350	19	5	960
2SIEL 250M2	406	349	-	168	60	140	18	64	250	37	24	90	480	135	135	445	635	23	550	500	450	19	5	1010
2SIEL 250M4-6	406	349	-	168	65	140	18	69	250	37	24	90	480	135	135	445	635	23	550	500	450	19	5	1040
2SIEL 280S2	457	368	419	190	65	140	18	69	280	40	24	105	550	130	165	520	720	23	550	500	450	19	5	1135
2SIEL 280S4-6	457	368	419	190	75	140	20	79.5	280	40	24	105	550	130	165	520	720	23	550	500	450	19	5	1135
2SIEL 280M2	457	368	419	190	65	140	18	69	280	40	24	105	550	130	165	520	720	23	550	500	450	19	5	1135
2SIEL 280M4-6	457	368	419	190	75	140	20	79.5	280	40	24	105	550	130	165	520	720	23	550	500	450	19	5	1135
2SIEL 315S2	508	406	457	216	65	140	18	69	315	48	28	135	610	135	205	600	805	23	660	600	550	24	6	1325
2SIEL 315S4-6	508	406	457	216	80	170	22	85	315	48	28	135	610	135	205	600	805	23	660	600	550	24	6	1355
2SIEL 315M2A;B;C;D	508	406	457	216	65	140	18	69	315	48	28	135	610	135	205	600	805	23	660	600	550	24	6	1325
2SIEL 315M4-6A;B;C;D	508	406	457	216	80	170	22	85	315	48	28	135	610	135	205	600	805	23	660	600	550	24	6	1355
2SIEL 315ML (4,6)	508	457	508	216	80	170	22	85	315	40	28	120	620	150	180	637	865	22	660	600	550	22	6	1345
2SIEL 355ML -2	610	560	630	254	80	170	22	85	355	50	28	150	720	250	300	890	935	24	800	740	680	22	6	1580
2SIEL 355ML (4,6)	610	560	630	254	100	210	28	106	355	50	28	150	720	250	300	890	935	24	800	740	680	22	6	1620
2SIEL 355H -2	610	900	-	254	70	140	20	74.5	355	45	28	160	730	265	265	1045	995	24	800	740	680	22	6	1854
2SIEL 355H (4,6)	610	900	-	254	100	210	28	106	355	45	28	160	730	265	265	1045	995	24	800	740	680	22	6	1924

Units in millimeters and (...) regards all RPMs (2p=2,4,6).

METRIC IEC Standard IM B34 & B34/1 C-Face IEC56-160

Mounting Dimensions



Series	Frame	Flange	A	B	C	D	E	F	GA	H	HA	K	M	N	P	S	LE	T	AA	AB	BB	HD	L
M	SLg 56-2A1	B34/1	90	71	36	9	20	3	10.2	56	7	8	85	70	105	M6	15	2.5	30	110	92	154	188
M	SLg 56-2A2	B34	90	71	36	9	20	3	10.2	56	7	8	65	50	80	M5	12.5	2.5	30	110	92	154	188
M	SLg 56-4A1	B34/1	90	71	36	9	20	3	10.2	56	7	8	85	70	105	M6	15	2.5	30	110	92	154	149*
M	SLg 56-4A2	B34	90	71	36	9	20	3	10.2	56	7	8	65	50	80	M5	12.5	2.5	30	110	92	154	149*
M	SLg 56-2B1	B34/1	90	71	36	9	20	3	10.2	56	7	8	85	70	105	M6	15	2.5	30	110	92	154	196
M	SLg 56-2B2	B34	90	71	36	9	20	3	10.2	56	7	8	65	50	80	M5	12.5	2.5	30	110	92	154	196
M	SLg 56-4B1	B34/1	90	71	36	9	20	3	10.2	56	7	8	85	70	105	M6	15	2.5	30	110	92	154	157*
M	SLg 56-4B2	B34	90	71	36	9	20	3	10.2	56	7	8	65	50	80	M5	12.5	2.5	30	110	92	154	157*
M	SLg 56-6B1	B34/1	90	71	36	9	20	3	10.2	56	7	8	85	70	105	M6	15	2.5	30	110	92	154	196
M	SLg 56-6B2	B34	90	71	36	9	20	3	10.2	56	7	8	65	50	80	M5	12.5	2.5	30	110	92	154	196
M	SLg 63-...A1	B34/1	100	80	40	11	23	4	12.5	63	8.5	10	100	80	120	M6	14	3	36	124	106	165	202
M	SLg 63-...A2	B34	100	80	40	11	23	4	12.5	63	8.5	10	75	60	90	M5	9.5	2.5	36	124	106	165	202
M	SLg 63-...B1	B34/1	100	80	40	11	23	4	12.5	63	8.5	10	100	80	120	M6	14	3	36	124	106	165	214
M	SLg 63-...B2	B34	100	80	40	11	23	4	12.5	63	8.5	10	75	60	90	M5	9.5	2.5	36	124	106	165	214
M	SLh 71-...A1	B34/1	112	90	45	14	30	5	16	71	8	10	115	95	140	M8	14	3	45	142	116	182	223
M	SLh 71-...A2	B34	112	90	45	14	30	5	16	71	8	10	85	70	105	M6	12	2.5	45	142	116	182	223
M	SLh 71-...B1	B34/1	112	90	45	14	30	5	16	71	8	10	115	95	140	M8	14	3	45	142	116	182	245
M	SLh 71-...B2	B34	112	90	45	14	30	5	16	71	8	10	85	70	105	M6	12	2.5	45	142	116	182	245
M	SLh 80-...A1	B34/1	125	100	50	19	40	6	21.5	80	9	10	130	110	160	M8	14	3.5	55	160	130	200	266
M	SLh 80-...A2	B34	125	100	50	19	40	6	21.5	80	9	10	100	80	120	M6	12	3	55	160	130	200	266
M	SLh 80-...B1	B34/1	125	100	50	19	40	6	21.5	80	9	10	130	110	160	M8	14	3.5	55	160	130	200	278
M	SLh 80-...B2	B34	125	100	50	19	40	6	21.5	80	9	10	100	80	120	M6	12	3	55	160	130	195	278
M	2SIEL 90S 2,4,6	B34/1	140	100	56	24j6	50	8h9	27	90	10	10	130	110j6	160	M8	10	3.5	41	170	153	228	331
M	2SIEL 90S 2,4,6	B34	140	100	56	24j6	50	8h9	27	90	10	10	115	95j6	140	M8	10	3	41	170	153	228	331
M	2SIEL 90L 2	B34/1	140	125	56	24j6	50	8h9	27	90	10	10	130	110j6	160	M8	10	3.5	41	170	153	228	331
M	2SIEL 90L 2	B34	140	125	56	24j6	50	8h9	27	90	10	10	115	95j6	140	M8	10	3	41	170	153	228	331
M	2SIEL 90L 4,6	B34/1	140	125	56	24j6	50	8h9	27	90	10	10	130	110j6	160	M8	10	3.5	41	170	153	228	356
M	2SIEL 90L 4,6	B34	140	125	56	24j6	50	8h9	27	90	10	10	115	95j6	140	M8	10	3	41	170	153	228	356
M	2SIEL 100L 2,6	B34/1	160	140	63	28j6	60	8h9	31	100	14	12	165	130j6	200	M10	12	3.5	44	197	174	250	377
M	2SIEL 100L 2,6	B34	160	140	63	28j6	60	8h9	31	100	14	12	130	110j6	160	M8	12	3.5	44	197	174	250	377
M	2SIEL 100L 4A	B34/1	160	140	63	28j6	60	8h9	31	100	14	12	165	130j6	200	M10	12	3.5	44	197	174	250	421
M	2SIEL 100L 4A	B34	160	140	63	28j6	60	8h9	31	100	14	12	130	110j6	160	M8	12	3.5	44	197	174	250	421
M	2SIEL 100L 4B	B34/1	160	140	63	28j6	60	8h9	31	100	14	12	165	130j6	200	M10	12	3.5	44	197	174	250	421
M	2SIEL 100L 4B	B34	160	140	63	28j6	60	8h9	31	100	14	12	130	110j6	160	M8	12	3.5	44	197	174	250	421
M	2SIEL 112M 2,6	B34/1	190	140	70	28j6	60	8h9	31	112	14	12	165	130j6	200	M10	12	3.5	49	230	174	276	389
M	2SIEL 112M 2,6	B34	190	140	70	28j6	60	8h9	31	112	14	12	130	110j6	160	M8	12	3.5	49	230	174	276	389
M	2SIEL 112M 4	B34/1	190	140	70	28j6	60	8h9	31	112	14	12	165	130j6	200	M10	12	3.5	49	230	174	276	416
M	2SIEL 112M 4	B34	190	140	70	28j6	60	8h9	31	112	14	12	130	110j6	160	M8	12	3.5	49	230	174	276	416
M	2SIEL 132S 2A,6	B34/1	216	140	89	38j6	80	10h9	41	132	17	12	215	180j6	250	M12	12	4	62	274	182	310	461
M	2SIEL 132S 2A,6	B34	216	140	89	38j6	80	10h9	41	132	17	12	165	130j6	200	M10	12	3.5	62	274	182	310	461
M	2SIEL 132S 2B,4	B34/1	216	140	89	38j6	80	10h9	41	132	17	12	215	180j6	250	M12	12	4	62	274	182	310	499
M	2SIEL 132S 2B,4	B34	216	140	89	38j6	80	10h9	41	132	17	12	165	130j6	200	M10	12	3.5	62	274	182	310	499
M	2SIEL 132M 4,6A,6B	B34/1	216	178	89	38j6	80	10h9	41	132	17	12	215	180j6	250	M12	12	4	62	274	220	310	499
M	2SIEL 132M 4,6A,6B	B34	216	178	89	38j6	80	10h9	41	132	17	12	165	130j6	200	M10	12	3.5	62	274	220	310	499
M	2SIEL 160M 2A,2B,4,6	B34/1	254	210	108	42k6	110	12h9	45	160	22	15	265	230j6	300	M12	13	4	60	305	256	365	611
M	2SIEL 160M 2A,2B,4,6	B34	254	210	108	42k6	110	12h9	45	160	22	15	215	180j6	250	M12	20	4	60	305	256	365	611
M	2SIEL 160L 2,4,6	B34/1	254	254	108	42k6	110	12h9	45	160	22	15	265	230j6	300	M12	13	4	60	305	300	365	655
M	2SIEL 160L 2,4,6	B34	254	254	108	42k6	110	12h9	45	160	22	15	215	180j6	250	M12	20	4	60	305	300	365	655

Units in millimeters and (...) regards all RPMs (2p=2,4,6).

B34 is standard B14 (C-Face) flange motor with feet. B34/1 is non-standard reduction B14 (C-Face) flange motor with feet.