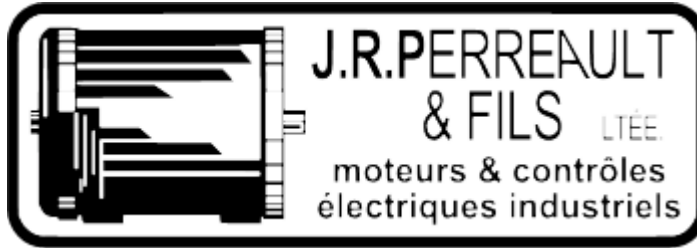


NEWPORT ELECTRIC MOTORS



Rolled Steel Motors



**A Complete Line of Single Phase and
Three Phase Rolled Steel Motors**

SINGLE PHASE, TEFC, 56C FRAME



- **1/3-2 Horse Power**
- **1800 and 3600 RPM**
- **C-Flange with Removable Feet**

High Starting Torque

Heavy (9) Gauge Rolled Steel Construction

NEMA Design B

Totally Enclosed Fan Cooled Protection



Class F Insulation System with Class H VPI Epoxy Resin Protection

Internal Oil Seal on Drive End

C-Flange with Removable Feet

Double Punched Foot Design

APPLICATIONS:

General Purpose Use on Pumps, Fans, Blowers, Compressors, Conveyors, Farm Equipment and Other Industrial Commercial Machinery Installed in Damp, Dusty or Dirty Environments. IP55 as Standard. Suitable for Indoor and Outdoor Applications. These Motors have High Starting Torques and are Well Suited for Applications with High Starting Loads.

SINGLE PHASE, 56C FRAME LIST PRICING

HP	RPM	FRAME	"C" DIM.	VOLTS	CATALOG NUMBER	LIST PRICE
1/3	3600	56C	13.9	115/208-230	F56C1/3S2C	330.00
	1800	56C	13.9	115/208-230	F56C1/3S4C	360.00
1/2	3600	56C	13.9	115/208-230	F56C1/2S2C	354.00
	1800	56C	13.9	115/208-230	F56C1/2S4C	372.00
3/4	3600	56C	13.9	115/208-230	F56C3/4S2C	366.00
	1800	56C	13.9	115/208-230	F56C3/4S4C	394.00
1	3600	56C	13.9	115/208-230	F56C1S2C	396.00
	1800	56C	13.9	115/208-230	F56C1S4C	406.00
1.5	3600	56C	13.9	115/208-230	F56C1.5S2C	428.00
	1800	56CH	14.2	115/208-230	F56CH1.5S4C	486.00
2	3600	56CH	14.2	115/208-230	F56CH2S2C	446.00
	1800	56C H	14.2	115/208-230	F56CH2S4C	522.00

ALSO AVAILABLE IN 1200 RPM (6 POLES)

TECHNICAL DATA

HP	Full load RPM	Frame	Service Factor	DE Bearing	ODE Bearing	LRA At 230V	Full load At 230V	FLT Ft-Lb	LRT %	BDT %	Full Load % Efficiency	Full Load % Power Factor	Weight
1/3	3470	56C	1.15	6203ZZ	6203ZZ	14	2.44	0.50	350	300	54	89	23
1/3	1750	56C	1.15	6203ZZ	6203ZZ	16	2.26	1.00	350	300	61	85	23
1/2	3450	56C	1.15	6203ZZ	6203ZZ	19	3.10	0.76	310	260	64	86	24
1/2	1755	56C	1.15	6203ZZ	6203ZZ	23	3.00	1.49	320	260	65	87	25
3/4	3450	56C	1.15	6203ZZ	6203ZZ	25	4.12	1.14	270	230	68	89	26
3/4	1740	56C	1.15	6203ZZ	6203ZZ	31	4.20	2.26	300	250	69	88	29
1	3480	56C	1.15	6203ZZ	6203ZZ	29	4.40	1.50	280	230	79	93	30
1	1750	56C	1.15	6203ZZ	6203ZZ	35	4.70	3.00	280	230	75	92	38
1.5	3480	56C	1.15	6203ZZ	6203ZZ	41	6.60	2.26	230	200	78	94	38
1.5	1750	56CH	1.15	6203ZZ	6203ZZ	49	6.60	4.50	260	220	77	95	42
2	3480	56CH	1.15	6203ZZ	6203ZZ	54	8.40	3.00	220	190	80	96	44
2	1745	56CH	1.15	6203ZZ	6203ZZ	63	8.30	6.00	290	240	82	96	47



FARM DUTY MOTORS



- **1/3 - 10 Horse Power**
- **1800 RPM**
- **Manual Overload Protection through 5HP**

High Starting Torques

Heavy (9) Gauge Rolled Steel Construction

NEMA Design B

Manual Overload Protection Through 5 HP

Class F Insulation System with Class H VPI Epoxy Resin Protection

Totally Enclosed Fan Cooled (TEFC) Protection

Internal Oil Seal on Drive End

Double Punched Foot Design

C-Flange Kit Available



APPLICATIONS:

General Purpose Use on Pumps, Fans, Conveyors, Poultry Equipment, Air Compressors and Other Farm Duty Machinery Requiring High Starting Torques.

FARM DUTY MOTORS LIST PRICING

HP	RPM	FRAME	"C" DIM.	VOLTS	CATALOG NUMBER	LIST PRICE
1/3	1800	56C	13.9	115/208-230	F56C1/3S4C-MO	396.00
1/2	1800	56C	13.9	115/208-230	F56C1/2S4C-MO	409.00
3/4	1800	56C	13.9	115/208-230	F56C3/4S4C-MO	435.00
1	1800	56C	13.9	115/208-230	F56C1S4C-MO	446.00
	1800	143T	14.4	115/208-230	F143T1S4C-MO	468.00
1.5	1800	56CH	14.2	115/208-230	F56CH1.5S4C-MO	534.00
	1800	145T	14.4	115/208-230	F145T1.5S4C-MO	560.00
2	1800	56CH	14.2	115/208-230	F56CH2S4C-MO	574.00
	1800	145T	14.4	115/208-230	F145T2S4C-MO	602.00
3	1800	182T	18.5	208-230	F182T3S4C-MO	995.00
5	1800	184T	18.5	208-230	F184T5S4C-MO	1115.00
7.5	1800	213T	21.0	208-230	F213T7.5S4C	1842.00
10	1800	215T	22.0	208-230	F215T10S4C	1965.00

ALSO AVAILABLE IN 3600 RPM (2 POLES)

C FLANGE LIST PRICING

FRAME	CATALOG NUMBER	LIST PRICE	WT. (LBS.)
140T	3140-NEFD	INCL.	10
180T	3180-NEFD	48.00 net	12
210T	3210-NEFD	56.00 net	15

TECHNICAL DATA

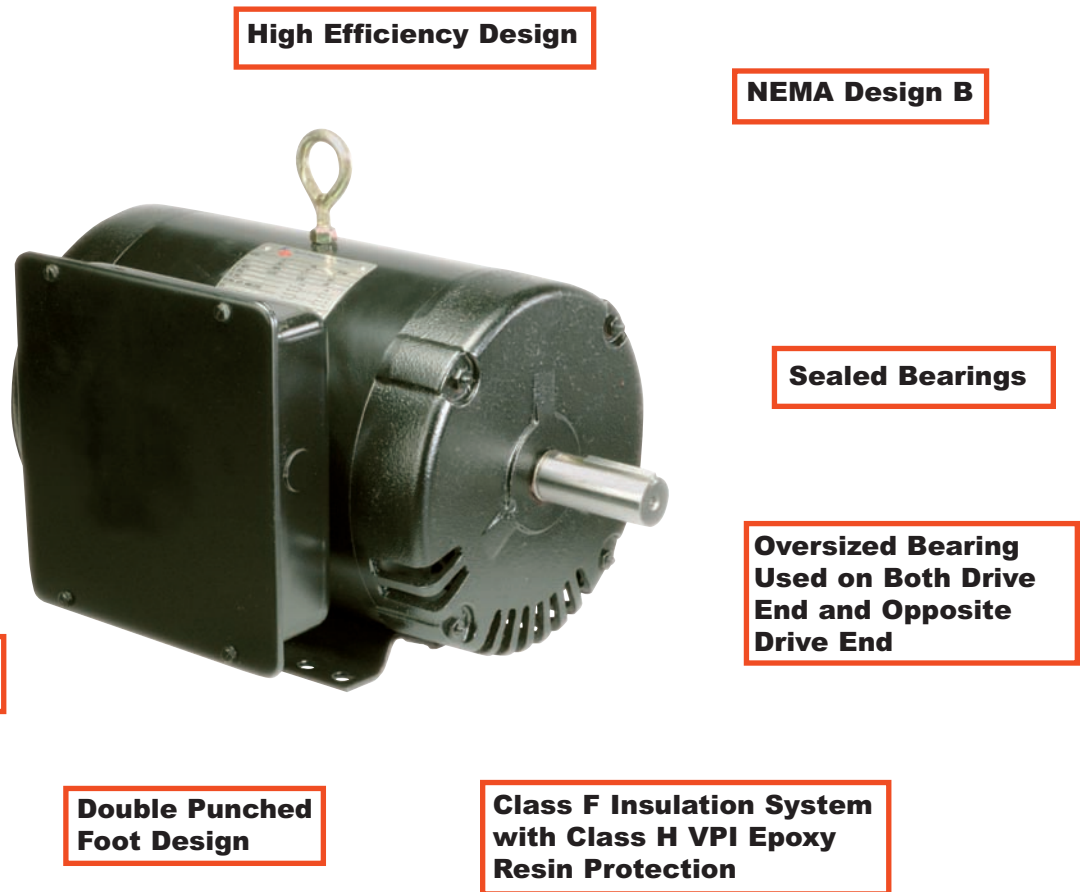
HP	Full load RPM	Frame	Service Factor	DE Bearing	ODE Bearing	LRA At 230V	Full load At 230V	FLT Ft-Lb	LRT %	BDT %	Full Load % Efficiency	Full Load % Power Factor	Weight
1/3	1750	56C	1.15	6203ZZ	6203ZZ	16	2.26	1.00	350	300	61	85	23
1/2	1755	56C	1.15	6203ZZ	6203ZZ	23	3.00	1.49	320	260	65	87	25
3/4	1740	56C	1.15	6203ZZ	6203ZZ	31	4.2	2.26	300	250	69	88	29
1	1750	56C	1.15	6203ZZ	6203ZZ	35	4.7	3.00	280	230	75	92	38
1	1750	145T	1.15	6205ZZ	6203ZZ	35	4.7	3.00	280	230	75	92	38
1.5	1750	56CH	1.15	6203ZZ	6203ZZ	49	6.6	4.50	260	220	77	95	42
1.5	1750	145T	1.15	6205ZZ	6203ZZ	49	6.6	4.50	260	220	77	95	42
2	1745	56CH	1.15	6203ZZ	6203ZZ	63	8.3	6.00	290	210	82	96	47
2	1745	145T	1.15	6205ZZ	6203ZZ	63	8.3	6.00	290	210	82	96	47
3	1735	182T	1.15	6206ZZ	6205ZZ	83	12.0	9.00	260	196	80	96	92
5	1730	184T	1.15	6206ZZ	6205ZZ	137	20.0	15.00	250	200	81	95	110
7.5	1750	213T	1.15	6307ZZ	6206ZZ	193	31.0	22.40	250	195	82	96	153
10	1750	215T	1.00	6307ZZ	6206ZZ	230	40.0	30.00	250	190	84	96	176



SINGLE PHASE OPEN DRIPPROOF



- **3-5 Horse Power**
- **1800 RPM**
- **Compressor Duty**



APPLICATIONS:

General Purpose Use on Pumps, Fans, Conveyors, Blowers, Air Compressors, Refrigeration Equipment, Industrial Equipment, Milling Machines, Tools, Farm Equipment, Aeration Equipment and Other General Purpose Applications Where Contaminants are Minimal. These Motors have Extremely High Starting Torques for use on Applications with High Starting Loads.

SINGLE PHASE OPEN DRIPPROOF MOTORS LIST PRICING

HP	RPM	FRAME	"C" DIM.	VOLTS	CATALOG NUMBER	LIST PRICE
3	1800	182T	15.8	208-230	D182T3S4C	825.00
5	1800	184T	15.8	208-230	D184T5S4C	925.00

C FLANGE LIST PRICING

FRAME	CATALOG NUMBER	LIST PRICE	WT. (LBS.)
180T	3180-SODP	48.00 net	12

TECHNICAL DATA

HP	Full load RPM	Frame	Service Factor	DE Bearing	ODE Bearing	LRA At 230V	Full load At 230V	FLT Ft-Lb	LRT %	BDT %	Full Load % Efficiency	Full Load % Power Factor	Weight
3	1740	182T	1.15	6206ZZ	6205ZZ	76	12.2	9.1	280	220	84	96	88
5	1740	184T	1.15	6206ZZ	6205ZZ	143	24.0	15.0	290	210	83	97	95



THREE PHASE, TEFC, 56C FRAME



- **1/3-3 Horse Power**
- **1800 and 3600 RPM**
- **C-Flange with Removable Feet**

**Inverter Rated
10:1VT; 5:CT**

High Starting Torque

**Heavy (9) Gauge
Rolled Steel
Construction**

NEMA Design B

**Totally Enclosed
Fan Cooled (TEFC)
Protection**

**Class F Insulation
Systems with Class
H VPI Epoxy Resin**



**Internal Oil Seal on
Drive End**

**C-Flange with
Removable Feet**

**Double Punched
Foot Design**

APPLICATIONS:

General Purpose Use on Pumps, Fans, Blowers, Compressors, Farm Equipment and Other Industrial and Commercial Machinery Installed in Damp, Dusty or Dirty Environments. IP55 Protection as Standard. Suitable for Indoor and Outdoor Applications. Additionally, These Motors do Utilize Phase Insulation Materials That are Suitable for use with Variable Frequency Drives.

THREE PHASE, TEFC, 56C FRAME LIST PRICING

HP	RPM	FRAME	"C" DIM.	VOLTS	CATALOG NUMBER	LIST PRICE
1/3	3600	56C	12.6	208-230/460	F56C1/3M2A	322.00
	1800	56C	12.6	208-230/460	F56C1/3M4A	324.00
1/2	3600	56C	12.6	208-230/460	F56C1/2M2A	332.00
	1800	56C	12.6	208-230/460	F56C1/2M4A	329.00
3/4	3600	56C	12.6	208-230/460	F56C3/4M2A	347.00
	1800	56C	12.6	208-230/460	F56C3/4M4A	339.00
1	3600	56C	12.6	208-230/460	F56C1M2A	356.00
	1800	56C	12.6	208-230/460	F56C1M4A	355.00
1.5	3600	56C	12.6	208-230/460	F56C1.5M2A	375.00
	1800	56C	12.6	208-230/460	F56C1.5M4A	367.00
2	3600	56C	12.6	208-230/460	F56C2M2A	421.00
	1800	56C H	12.6	208-230/460	F56CH2M4A	473.00
3	3600	56C H	12.6	208-230/460	F56CH3M2A	792.00

ALSO AVAILABLE IN 1200 RPM (6 POLES)

TECHNICAL DATA

HP	Full load RPM	Frame	Service Factor	DE Bearing	ODE Bearing	LRA At 460V	Full load At 460V	FLT Ft-Lb	LRT %	BDT %	Full Load % Efficiency	Full Load % Power Factor	Weight
1/3	3515	56C	1.15	6203ZZ	6203ZZ	5.3	0.94	0.49	240	452	51	65	24
1/3	1760	56C	1.15	6203ZZ	6203ZZ	4.5	0.95	0.99	245	449	57	57	25
1/2	3515	56C	1.15	6203ZZ	6203ZZ	7.0	1.14	0.74	245	450	53	77	26
1/2	1766	56C	1.15	6203ZZ	6203ZZ	7.0	1.27	1.71	270	531	63	63	26
3/4	3500	56C	1.15	6203ZZ	6203ZZ	10.0	1.45	1.11	220	420	66	50	26
3/4	1760	56C	1.15	6203ZZ	6203ZZ	10.9	1.76	2.23	340	284	68	69	29
1	3500	56C	1.15	6203ZZ	6203ZZ	12.0	1.83	1.55	220	400	73	54	27
1	1760	56C	1.15	6203ZZ	6203ZZ	14.1	2.26	3.05	320	488	71	74	34
1.5	3510	56C	1.15	6203ZZ	6203ZZ	16.9	2.72	2.30	220	250	78	74	29
1.5	1760	56C	1.15	6203ZZ	6203ZZ	19.7	2.78	4.50	335	525	76	83	37
2	3510	56C	1.15	6203ZZ	6203ZZ	20.0	2.96	3.00	210	240	76	83	34
2	1750	56CH	1.15	6203ZZ	6203ZZ	24.8	3.42	6.05	340	270	76	67	45
3	3500	56CH	1.15	6203ZZ	6203ZZ	32.0	4.36	4.50	280	230	81	80	42

575 VOLTS AMPS = 460 VOLTS AMPS X 0.80



THREE PHASE, TEFC, INTEGRAL HORSE POWER



- **1-10 Horse Power**
- **1800 and 3600 RPM**
- **Inverter Rated**

**Inverter Rated
10:1 Variable Torque
5:1 Constant Torque**

High Starting Torque

**Heavy (9) Gauge
Rolled Steel
Construction**

NEMA Design B

**Totally Enclosed
Fan Cooled (TEFC)
Protection**



**Class F Insulation
Systems with Class
H VPI Epoxy Resin.**

**Internal Oil Seal on
Drive End**

**Double Punched
Foot Design**

**C-Flange Kits
Available**

APPLICATIONS:

General Purpose Use on Pumps, Fans, Blowers, Compressors, Conveyors, Material Handling and Other Industrial Machinery Installed in Damp, Dusty or Dirty Environments. Additionally, These Motors are Suitable for use with Variable Frequency Drives.

THREE PHASE, TEFC, INTEGRAL HORSEPOWER LIST PRICING

HP	RPM	FRAME	"C" DIM.	VOLTS	CATALOG NUMBER	LIST PRICE
1	1800	143T	13.3"	208-230/460	F143T1M4A	486.00
1.5	3600	143T	13.3"	208-230/460	F143T1.5M2A	504.00
	1800	145T	13.3"	208-230/460	F145T1.5M4A	522.00
2	3600	145T	13.3"	208-230/460	F145T2M2A	528.00
	1800	145T	13.3"	208-230/460	F145T2M4A	540.00
3	3600	182T	15.8"	208-230/460	F182T3M2A	816.00
	1800	182T	15.8"	208-230/460	F182T3M4A	780.00
5	3600	184T	15.8"	208-230/460	F184T5M2A	901.00
	1800	184T	15.8"	208-230/460	F184T5M4A	870.00
7.5	3600	213T	19.0"	208-230/460	F213T7.5M2A	1284.00
	1800	213T	19.0"	208-230/460	F213T7.5M4A	1212.00
10	3600	215T	19.0"	208-230/460	F215T10M2A	1356.00
	1800	215T	19.0"	208-230/460	F215T10M4A	1314.00

C FLANGE LIST PRICING

FRAME	CATALOG NUMBER	LIST PRICE	WT. (LBS.)
140T	3140-RSTE	INCL.	10
180T	3180-RSTE	48.00 net	12
210T	3210-RSTE	56.00 net	15

TECHNICAL DATA

HP	Full load RPM	Frame	Service Factor	DE Bearing	ODE Bearing	LRA At 460V	Full load At 460V	FLT Ft-Lb	LRT %	BDT %	Full Load % Efficiency	Full Load % Power Factor	Weight
1	1760	143T	1.15	6205ZZ	6203ZZ	15.00	1.70	2.98	240	270	82.5	77	48
1.5	3500	143T	1.15	6205ZZ	6203ZZ	16.9	2.1	2.3	220	250	82.5	78	43
1.5	1745	145T	1.15	6205ZZ	6203ZZ	19.7	2.5	4.5	250	280	84.0	71	52
2	3490	145T	1.15	6205ZZ	6203ZZ	20.0	2.6	3.0	210	240	84.0	82	45
2	1740	145T	1.15	6205ZZ	6203ZZ	25.0	3.0	6.0	195	240	84.0	70	55
3	3475	182T	1.15	6206ZZ	6206ZZ	32.0	3.8	4.5	190	230	85.5	85	69
3	1760	182T	1.15	6206ZZ	6206ZZ	32.0	3.9	9.0	215	250	87.5	75	88
5	3510	184T	1.15	6206ZZ	6206ZZ	46.0	6.1	7.5	190	215	87.5	85	88
5	1745	184T	1.15	6206ZZ	6206ZZ	46.0	6.5	15.1	185	225	87.5	82	95
7.5	3490	213T	1.15	6307ZZ	6306ZZ	63.5	9.2	11.3	185	200	88.5	82	121
7.5	1760	213T	1.15	6307ZZ	6206ZZ	63.5	9.4	22.6	175	215	89.5	79	137
10	3545	215T	1.15	6307ZZ	6206ZZ	80.0	11.8	14.8	175	200	89.5	85	134
10	1750	215T	1.15	6307ZZ	6206ZZ	80.5	12.5	30.0	165	200	89.5	80	146

575 VOLTS AMPS = 460 VOLTS AMPS X 0.80



THREE PHASE, OPEN DRIPPROOF MOTORS



- 1-15 Horse Power
- 1800 and 3600 RPM
- Inverter Rated

**AC Inverter Rated
10:1 Variable Torque
5:1 Constant Torque**

High Efficiency Design

**High Starting
Torques**

NEMA Design B

**Heavy (9) Gauge
Rolled Steel
Construction**

Sealed Bearings

**Open Dripproof
IP23 Protection**

**Oversized Bearings
Used on Both Drive
End and Opposite
Drive End**

**Class F Insulation
System with Class H
VPI Epoxy Resin**

**Double Punched
Foot Design**



APPLICATIONS:

General Purpose Use on Pumps, Fans, Blowers, Compressors, Material Handling and Other General Purpose Applications Where Contaminants are Minimal.

THREE PHASE, OPEN DRIPPROOF LIST PRICING

HP	RPM	FRAME	"C" DIM.	VOLTS	CATALOG NUMBER	LIST PRICE
1	1800	143T	11.8"	208-230/460	D143T1M4A	528.00
	1200	145T	11.8"	208-230/460	D145T1M6A	580.00
1.5	3600	143T	11.8"	208-230/460	D143T1.5M2A	468.00
	1800	145T	11.8"	208-230/460	D145T1.5M4A	570.00
	1200	182T	13.5"	208-230/460	D182T1.5M6A	732.00
2	3600	145T	11.8"	208-230/460	D145T2M2A	480.00
	1800	145T	11.8"	208-230/460	D145T2M4A	601.00
	1200	184T	13.5"	208-230/460	D184T2M6A	796.00
3	3600	145T	11.8"	208-230/460	D145T3M2A	534.00
	1800	182T	13.5"	208-230/460	D182T3M4A	852.00
	1200	213T	16.8"	208-230/460	D213T3M6A	1068.00
5	3600	182T	13.5"	208-230/460	D182T5M2A	804.00
	1800	184T	13.5"	208-230/460	D184T5M4A	930.00
	1200	215T	16.8"	208-230/460	D215T5M6A	1199.00
7.5	3600	184T	13.5"	208-230/460	D184T7.5M2A	902.00
	1800	213T	16.8"	208-230/460	D213T7.5M4A	1188.00
10	3600	213T	16.8"	208-230/460	D213T10M2A	1351.00
	1800	215T	16.8"	208-230/460	D215T10M4A	1284.00
15	3600	215T	16.8"	208-230/460	D215T15M2A	1386.00
	1800	254T	21.0"	208-230/460	D254T15M4A	1788.00
20	1800	256T	21.0"	208-230/460	D256T20M4A	1938.00

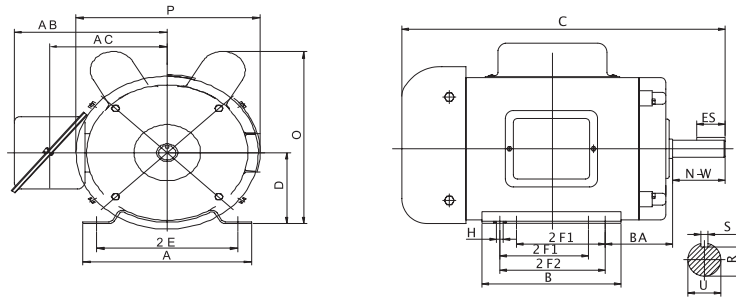
TECHNICAL DATA

HP	Full load RPM	Frame	Service Factor	DE Bearing	ODE Bearing	LRA At 460V	Full load At 460V	FLT Ft-Lb	LRT %	BDT %	Full Load % Efficiency	Full Load % Power Factor	Weight
1	1755	143T	1.15	6205ZZ	6203ZZ	15.0	1.6	3.1	320	488	82.5	54	41
	1150	145T	1.15	6205ZZ	6203ZZ	15.0	1.9	4.6	305	280	80.0	65	40
1.5	3500	143T	1.15	6205ZZ	6203ZZ	20.0	2.1	2.3	310	270	82.5	78	37
1.5	1745	145T	1.15	6205ZZ	6203ZZ	20.0	2.3	4.5	260	280	84.0	71	44
1.5	1180	182T	1.15	6206ZZ	6206ZZ	20.0	2.6	6.8	170	260	84.0	75	67
2	3490	145T	1.15	6205ZZ	6203ZZ	25.0	2.7	3.0	210	240	84.0	82	38
2	1740	145T	1.15	6205ZZ	6203ZZ	25.0	3.1	6.0	170	240	84.0	70	48
2	1180	184T	1.15	6206ZZ	6206ZZ	25.0	3.4	9.0	175	260	85.5	80	73
3	3475	145T	1.15	6205ZZ	6203ZZ	25.0	4.0	4.5	170	230	84.0	85	41
3	1760	182T	1.15	6206ZZ	6206ZZ	32.0	4.1	9.0	215	250	86.5	75	78
3	1175	213T	1.15	6206ZZ	6206ZZ	32.0	4.9	13.5	180	240	86.5	85	103
5	3510	182T	1.15	6206ZZ	6206ZZ	46.0	6.4	7.5	150	215	85.5	85	73
5	1745	184T	1.15	6206ZZ	6206ZZ	46.0	6.5	15.1	185	225	87.5	82	85
5	1170	215T	1.15	6307ZZ	6206ZZ	46.0	8.2	22.7	180	210	87.5	83	112
7.5	3490	184T	1.15	6206ZZ	6206ZZ	63.5	9.2	11.3	170	200	87.5	82	80
7.5	1760	213T	1.15	6307ZZ	6206ZZ	63.5	9.5	22.6	175	215	88.5	79	120
10	3545	213T	1.15	6307ZZ	6206ZZ	81.0	12.6	14.8	180	200	88.5	85	114
10	1750	215T	1.15	6307ZZ	6206ZZ	81.0	12.5	30.0	165	200	89.5	83	131
15	3535	215T	1.15	6307ZZ	6206ZZ	116.0	18.1	22.5	140	200	89.5	82	126
15	1750	254T	1.15	6309ZZ	6208ZZ	116.0	18.1	45.0	171	200	89.5	82	198
20	1750	256T	1.15	6309ZZ	6208ZZ	145.0	24.6	60.0	176	176	89.5	85	216

575 VOLTS AMPS = 460 VOLTS AMPS X 0.80

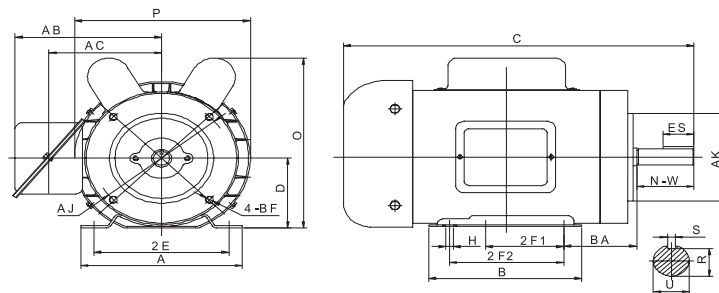


Single Phase TEFC Foot Mount 56 Frame - 145T Frame



FRAME	A Max	B	C	D	H	BA	2E	2F1	2F2	AB	AC	T	O	P	Shaft			Keyway			AA
															N-W	U	S	R	ES		
56	6.3	3.94	13.9	3.5	0.34	2.75	4.88	3.0	NA	6.5	4.9	NA	8.6	6.9	1.80	0.625	0.188	0.517	1.41	0.80	
56H	6.3	6.50	14.2	3.5	0.34	2.75	4.88	3.0	5.0	6.5	4.9	NA	8.6	6.9	1.80	0.625	0.188	0.517	1.41	0.80	
143T	6.7	5.90	13.6	3.5	0.34	2.25	5.50	4.0	5.0	6.5	4.9	NA	8.7	6.9	2.25	0.875	0.188	0.771	1.41	0.80	
145T	6.7	5.90	14.4	3.5	0.34	2.25	5.50	4.0	5.0	6.5	4.9	NA	8.7	6.9	2.25	0.875	0.188	0.771	1.41	0.80	

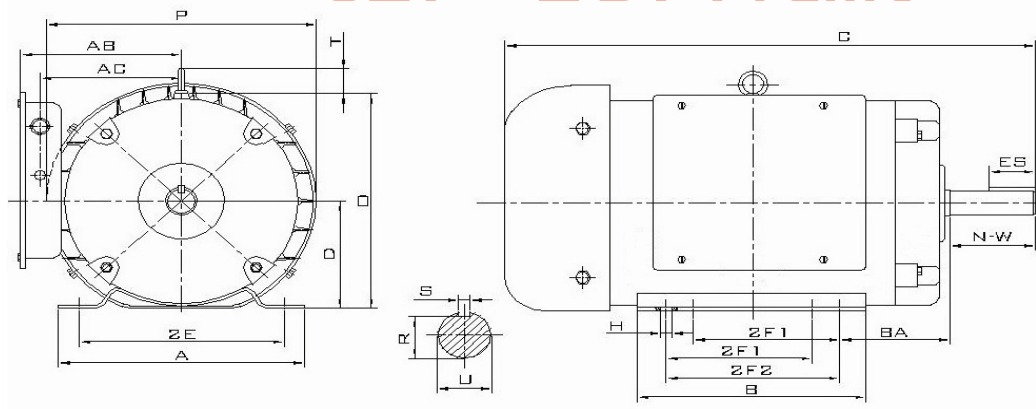
Single Phase TEFC C-Flange Mount 56C - 145TC Frame



FRAME	AJ	AK	BA	BB	BC	BD	BF	BF Dep	U	AH	R	ES	S	AA
56C	5.875	4.50	2.75	0.16	0.19	6.5	3/8-16	NA	0.625	2.06	0.517	1.41	0.19	0.80
56CH	5.875	4.50	2.75	0.16	0.19	6.5	3/8-16	NA	0.625	2.06	0.517	1.41	0.19	0.80
143TC	5.875	4.50	2.75	0.16	0.12	6.5	3/8-16	0.56	0.875	2.12	0.771	1.41	0.19	0.80
145TC	5.875	4.50	2.75	0.16	0.12	6.5	3/8-16	0.56	0.875	2.12	0.771	1.41	0.19	0.80

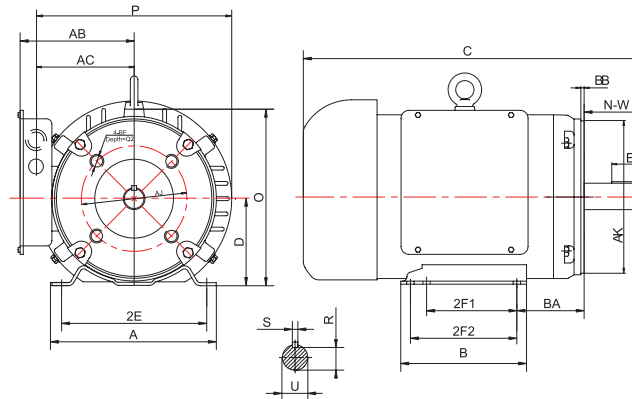
Note: Dep = Depth

Single Phase TEFC Foot Mount 182T - 215T Frame



FRAME	A Max	B	C	D	H	BA	2E	2F1	2F2	AB	AC	T	O	P	Shaft		Keyway			AA
															N-W	U	S	R	ES	
182T	8.5	6.5	16.3	4.50	0.41	2.75	7.5	4.5	5.5	6.7	5.43	2.0	9.25	9.5	2.75	1.125	0.250	0.986	1.78	1.10
184T	8.5	6.5	17.7	4.50	0.41	2.75	7.5	4.5	5.5	6.7	5.43	2.0	9.25	9.5	2.75	1.125	0.250	0.986	1.78	1.10
213T	10.5	8.7	20.3	5.25	0.41	3.50	8.5	5.5	7.0	7.5	6.50	2.0	10.80	11.0	3.38	1.375	0.312	1.201	2.41	1.38
215T	10.5	8.7	21.7	5.25	0.41	3.50	8.5	5.5	7.0	7.8	6.50	2.0	10.80	11.0	3.38	1.375	0.312	1.201	2.41	1.38

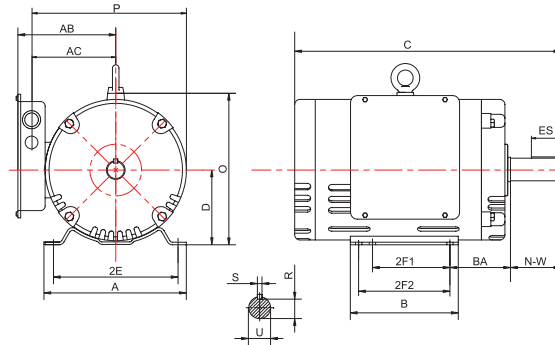
Single Phase TEFC C-Flange Mount 182TC - 215TC Frame



FRAME	AJ	AK	BA	BB	BC	BD	BF	BF Dep	U	AH	R	ES	S	AA
182TC	7.25	8.50	3.50	0.25	0.12	9.0	1/2-13	0.75	1.125	2.62	0.986	1.78	0.25	1.10
184TC	7.25	8.50	3.50	0.25	0.12	9.0	1/2-14	0.75	1.125	2.62	0.986	1.78	0.25	1.10
213TC	7.25	8.50	4.25	0.25	0.12	9.0	1/2-15	0.75	1.375	3.12	1.201	2.41	0.31	1.38
215TC	7.25	8.50	4.25	0.25	0.12	9.0	1/2-16	0.75	1.375	3.12	1.201	2.41	0.31	1.38

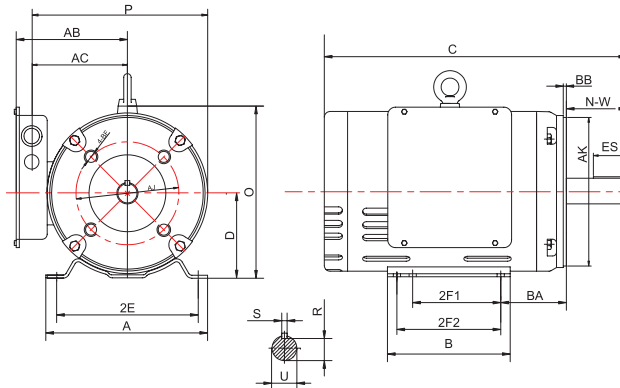
Note: Dep = Depth

Single Phase Open Dripproof I82T - I84T Frame



FRAME	A Max	B	C	D	H	BA	2E	2F1	2F2	AB	AC	T	O	P	Shaft		Keyway			AA
															N-W	U	S	R	ES	
182T	8.5	6.7	15.5	4.50	0.41	2.50	7.5	4.5	5.5	7.0	5.7	1.97	8.5	8.66	2.75	1.125	0.25	0.986	1.78	1.10
184T	8.5	6.7	15.5	4.50	0.41	2.50	7.5	4.5	5.5	7.0	5.7	1.97	8.5	8.66	2.75	1.125	0.25	0.986	1.78	1.10

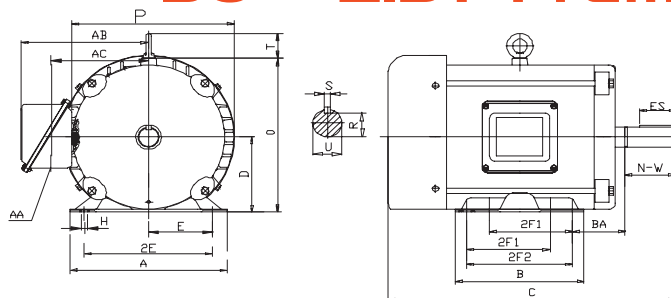
C-Flange Single Phase Open Dripproof I82TC - I84TC Frame



FRAME	AJ	AK	BA	BB	BC	BD	BF	BF Dep	U	AH	R	ES	S	AA
182TC	7.250	8.50	3.50	0.25	0.12	9.0	1/2-13	0.75	1.125	2.62	0.986	1.78	0.25	1.10
184TC	7.250	8.50	3.50	0.25	0.12	9.0	1/2-13	0.75	1.125	2.62	0.986	1.78	0.25	1.10

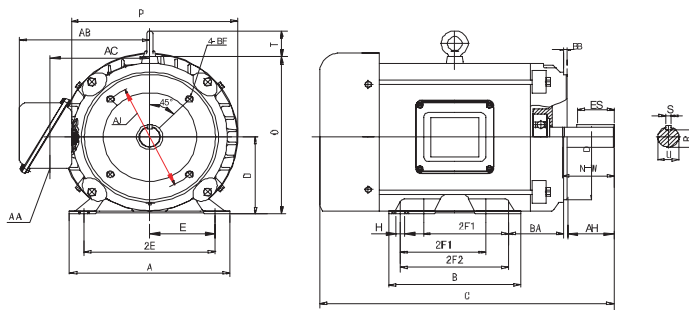
Note: Dep = Depth

Three Phase TEFC 56 - 215T Frame



FRAME	A Max	B	C	D	H	BA	2E	2F1	2F2	AB	AC	T	O	P	Shaft		Keyway			AA
															N-W	U	S	R	ES	
56	6.3	3.94	12.6	3.5	0.34	2.75	4.88	3.0	NA	6.5	4.9	NA	7.00	6.9	1.80	0.625	0.188	0.517	1.41	0.80
56H	6.3	6.50	12.6	3.5	0.34	2.75	4.88	3.0	5.0	6.5	4.9	NA	7.00	6.9	1.80	0.625	0.188	0.517	1.41	0.80
143T	7.0	6.00	13.4	3.50	0.34	2.25	5.50	4.0	5.0	6.5	4.9	1.6	7.09	8.0	2.25	0.875	0.188	0.771	1.41	1.10
145T	7.0	6.00	13.4	3.50	0.34	2.25	5.50	4.0	5.0	6.5	4.9	1.6	7.09	8.0	2.25	0.875	0.188	0.771	1.41	1.10
182T	9.0	6.70	15.7	4.50	0.41	2.75	7.50	4.5	5.5	7.3	5.7	2.0	9.25	10.2	2.75	1.125	0.250	0.986	1.78	1.10
184T	9.0	6.70	17.7	4.50	0.41	2.75	7.50	4.5	5.5	7.3	5.7	2.0	9.25	10.2	2.75	1.125	0.250	0.986	1.78	1.10
213T	10.5	8.70	19.3	5.25	0.41	3.50	8.50	5.5	7.0	8.6	6.5	2.0	10.70	11.7	3.38	1.375	0.312	1.201	2.41	1.38
215T	10.5	8.70	19.3	5.25	0.41	3.50	8.50	5.5	7.0	8.6	6.5	2.0	10.70	11.7	3.38	1.375	0.312	1.201	2.41	1.38

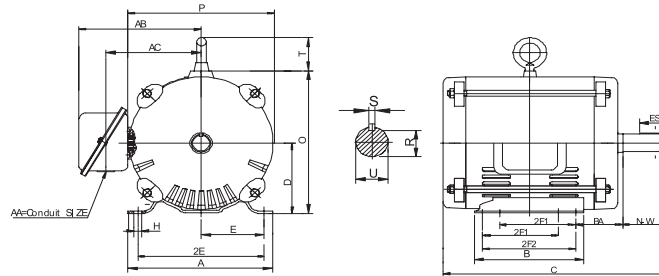
C-Flange Three Phase TEFC 56C - 215TC Frame



FRAME	AJ	AK	BA	BB	BC	BD	BF	BF Dep	U	AH	R	ES	S	AA
56C	5.875	4.50	2.75	0.16	0.19	6.5	3/8-16	NA	0.625	2.06	0.517	1.41	0.19	0.80
56CH	5.875	4.50	2.75	0.16	0.19	6.5	3/8-16	NA	0.625	2.06	0.517	1.41	0.19	0.80
143TC	5.875	4.50	2.75	0.16	0.12	6.5	3/8-16	0.56	0.875	2.12	0.771	1.41	0.19	1.10
145TC	5.875	4.50	2.75	0.16	0.12	6.5	3/8-16	0.56	0.875	2.12	0.771	1.41	0.19	1.10
182TC	7.250	8.50	3.50	0.25	0.12	9.0	1/2-13	0.75	1.125	2.62	0.986	1.78	0.25	1.10
184TC	7.250	8.50	3.50	0.25	0.12	9.0	1/2-13	0.75	1.125	2.62	0.986	1.78	0.25	1.10
213TC	7.250	8.50	4.25	0.25	0.12	9.0	1/2-13	0.75	1.375	3.12	1.201	2.41	0.31	1.38
215TC	7.250	8.50	4.25	0.25	0.12	9.0	1/2-13	0.75	1.375	3.12	1.201	2.41	0.31	1.38

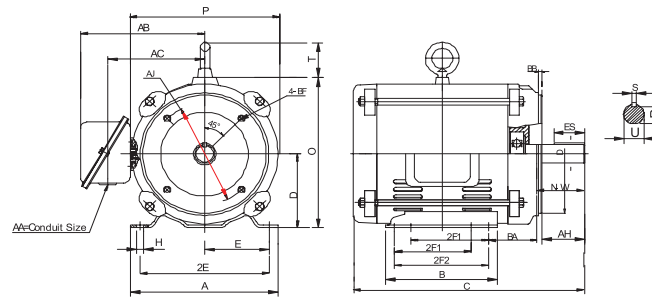
Note: Dep = Depth

Three Phase Open Dripproof I43T - 256T Frame



FRAME	A Max	B	C	D	H	BA	2E	2F1	2F2	AB	AC	T	O	P	Shaft		Keyway			AA
															N-W	U	S	R	ES	
143T	7.0	6.0	11.8	3.50	0.34	2.25	5.5	4.0	5.0	6.5	4.9	1.57	7.09	6.89	2.25	0.875	0.19	0.771	1.41	1.10
145T	7.0	6.0	11.8	3.50	0.34	2.25	5.5	4.0	5.0	6.5	4.9	1.57	7.09	6.89	2.25	0.875	0.19	0.771	1.41	1.10
182T	9.0	6.7	13.8	4.50	0.41	2.75	7.5	4.5	5.5	7.3	5.7	1.97	9.25	8.66	2.75	1.125	0.25	0.986	1.78	1.10
184T	9.0	6.7	13.8	4.50	0.41	2.75	7.5	4.5	5.5	7.3	5.7	1.97	9.25	8.66	2.75	1.125	0.25	0.986	1.78	1.10
213T	10.5	8.7	16.9	5.25	0.41	3.50	8.5	5.5	7.0	8.6	6.5	1.97	10.7	10.3	3.38	1.375	0.31	1.201	2.41	1.38
215T	10.5	8.1	16.9	5.25	0.41	3.50	8.5	5.5	7.0	8.6	6.5	1.97	10.7	10.3	3.38	1.375	0.31	1.201	2.41	1.38
254T	12.5	11.25	20.7	6.25	0.53	4.25	10.0	8.25	10.0	10.25	8.25	1.0	11.75	11.5	4.00	1.625	.375	1.416	2.91	1.25
256T	12.5	11.31	20.7	6.25	0.53	4.25	10.0	8.25	10.0	10.25	8.25	1.0	11.75	11.5	4.00	1.625	.375	1.416	2.91	1.25

C-Flange Three Phase Open Dripproof I43C - 256TC Frame



FRAME	AJ	AK	BA	BB	BC	BD	BF	BF Dep	U	AH	R	ES	S	AA
143TC	5.875	4.50	2.75	0.16	0.12	6.5	3/8-16	0.56	0.875	2.12	0.771	1.41	0.19	1.10
145TC	5.875	4.50	2.75	0.16	0.12	6.5	3/8-16	0.56	0.875	2.12	0.771	1.41	0.19	1.10
182TC	7.250	8.50	3.50	0.25	0.12	9.0	1/2-13	0.75	1.125	2.62	0.986	1.78	0.25	1.10
184TC	7.250	8.50	3.50	0.25	0.12	9.0	1/2-13	0.75	1.125	2.62	0.986	1.78	0.25	1.10
213TC	7.250	8.50	4.25	0.25	0.25	9.0	1/2-13	0.75	1.375	3.12	1.201	2.41	0.31	1.38
215TC	7.250	8.50	4.25	0.25	0.25	9.0	1/2-13	0.75	1.375	3.12	1.201	2.41	0.31	1.38
254TC	7.250	8.50	4.75	0.25	0.25	10.0	1/2-13	0.75	1.625	3.75	1.416	2.91	0.375	1.25
256TC	7.250	8.50	4.75	0.25	0.25	10.0	1/2-13	0.75	1.625	3.75	1.416	2.91	0.375	1.25

Note: Dep = Depth

